

**AGRICULTURAL
STATISTICS
POCKETBOOK**

2021



AGRICULTURAL STATISTICS POCKETBOOK 2021

Institute of Agricultural Economics
Budapest, 2022

Editors

Gabriella KISS, Attila VRANA

Proofreader

Andrea VERES

Published by

AKI Agrárközgazdasági Intézet
Nonprofit Korlátolt Felelősségű Társaság

Dr. Pál GODA
managing director



3–5. Zsil utca, H-1093 Budapest
Phone: (+36 1) 217-1011
Fax: (+36 1) 217-8111
<https://aki.gov.hu>
aki@aki.gov.hu

<https://doi.org/10.7896/zsk2202>
ISSN 2786-3719

Printed and bound by Prime Rate Kft.
© Institute of Agricultural Economics

Photos used on cover:
Bence Balla-Schottner, Dave Hoefler, Jean Wimmerlin,
Johny Goerend, Marcin Jozwiak, Pok Rie, Ricardo Resende,
Tom Fisk, Benjamin Vörös and www.freepik.com



Use of this work in the Attribution! – NonCommercial! – ShareAlike!
4.0 International (CC BY-NC-SA 4.0) licence.

Read more about the conditions of use:
<https://creativecommons.org/licenses/by-nc-sa/4.0/>

CONTENTS

EXPLANATION OF SYMBOLS	7
ADDITIONAL INFORMATION	8
FOREWORD.....	9

SUMMARY DATA ON THE AGRICULTURAL SUB-SECTORS..... 12

Number of people employed	14
Students in higher education in bachelor's and master's degree programs in the field of agriculture and all fields of training	15
Number of students in the field of agriculture by county, 2021	16
Gross output and gross value added by sub-sectors	17
Investment outlay by sub-sectors	18
Construction investments outlay by sub-sectors	19
Machinery investment outlay by sub-sectors	20
Average monthly gross and net earnings of full-time employees in agricultural sub-sectors.....	21

AGRICULTURE..... 22

Area by land use 1 st June.....	24
Main energy sources in forestry and agriculture	24
Sale and use of fertilizers	25
Farms' use of inorganic fertilizers	25
Farms' use of organic fertilizers	26
Raw materials used for the production of compound feed.....	27
Manufacture of compound feed for livestock	27
Sales of pesticide	28
Production of main crops	29
Viticulture and fruit growing	30
Livestock.....	30

Production of animals for slaughter and animal products	31
Live animals for slaughter in slaughterhouses	31
Main indicators of livestock production	32
Use of biomass for energy	33
Terms of trade	33
Agricultural producer price indices	34
Volume indices of sales of agricultural products	34
Average prices of main products	35
Average market prices	36
Annual average consumer prices of selected goods	38
Sales of agricultural machinery	39
Costs and returns of wheat and maize production	40
Costs and returns of sunflower and rape production	40
Costs and returns of sweetcorn and green pea production	41
Costs and returns of apple and sour cherry production	41
Costs and returns of dairy cow and table egg production	42
Costs and returns of pig and chicken fattening	42
Economic accounts for agriculture	43
Agricultural labour input	43
Agricultural income indices	44
Volume indices of agricultural output and gross value added	44
Agricultural insurance premiums	45
Agricultural insurance claim payments	45

FOOD INDUSTRY 46

Registered food processing enterprises by sub-sectors	48
People employed in sub-sectors of food industry	49
Gross average earnings of employees in sub-sectors of food industry	50
Net average earnings of employees in sub-sectors of food industry	51
Volume indices of gross output in branches of food industry	52
Investments of food processing enterprises	53
The main financial results of the food industry by sub-sectors	54
The main financial results of the food industry by sub-sectors, 2020	55
Consumption per capita	56
Total stock of loans of the food industry	57

FORESTRY, FISHERY 58

Forest area, forest as percentage of land area	60
Forestation.....	61
Logging.....	61
Stocked area and logging by species.....	62
Total forest damage, 2021	63
Wild game population, 2022 (estimated).....	65
Game management 2021	66
Pond aquaculture, intensive fish farming, 2021	67

INTERNATIONAL TRADE..... 68

International trade by main commodity groups	70
International trade by commodity groups	71
Exports by commodity groups.....	72
Imports by commodity groups	73
Exports of main agricultural and food-industrial products	74
Imports of main agricultural and food-industrial products.....	75
Export to main partner countries.....	76
Import from main partner countries.....	77

COUNTY DATA 78

Land area by regions 1 st june 2021	80
Production of wheat by regions 2021.....	81
Production of barley by regions 2021.....	82
Production of maize by regions 2021	83
Production of sugar beet by regions 2021	84
Production of sunflower seed by regions 2021	85
Production of soybeans by regions 2021	86
Production of rapeseed by regions 2021	87
Production of fruit and grapes by regions	88
Cattle and pig stock by regions 1 st december 2021	89
Sheep and hen stock by regions 1 st december 2021	90
Livestock density 1 st december.....	91

INTERNATIONAL DATA 92

Production of cereals	94
Production of wheat.....	95
Production of barley.....	96
Production of rye.....	97
Production of oats.....	98
Production of maize	99
Production of rice, paddy	100
Production of sugar-beet	101
Production of sunflower seeds.....	102
Production of rapeseed.....	103
Production of potatoes.....	104
Total production of vegetables	105
Production of apple.....	106
Production of grapes	107
Cattle population	108
Pig population	109
Sheep population.....	110
Pork production	111
Beef and veal production	112
Milk production	113
Employment.....	114
Producer price index, nominal value.....	115
Input price index, nominal value	116
Producer price index, nominal value.....	117
Purchase price index of agricultural goods and services, nominal value	118

EXPLANATION OF SYMBOLS

Statistical notations:

- .. = data not available
- ... = confidential data closed with data security barriers
- = no data
- 0 = data cannot be expressed, being smaller than the unit applied
- +⁾ = preliminary estimates

Note:

Data for the year 2021 are preliminary therefore they may change later. Methodological information related to the data on the infographics and the map can be found below the tables containing the data.

ADDITIONAL INFORMATION

The publication provides information on the developments and situation in agriculture, forestry and food industry in 2021. Statistical data published in previous pocket-books were used to provide comparability of time series.

Besides national and branch indicators and data, principal agricultural data are presented in details by counties.

International statistics are suitable to show the main trends.

The published data are compiled based on the publications of the Hungarian Central Statistical Office (KSH), National Game Management Database (OVA), Hungarian Energy and Public Utility Regulatory Authority (MEKH), National Land Centre (NFK), EUROSTAT, the Food and Agricultural Organization (FAO) and the Institute of Agricultural Economics (AKI).

Date of closure of the manuscript 1st October 2022.



FOREWORD



Dr. Pál Goda

Managing Director
Institute of Agricultural
Economics

In almost seven decades, the Institute of Agricultural Economics has grown into a research and knowledge center with Hungary's most important agricultural economic databases. Our institute supports the development of the Hungarian countryside and agriculture by performing research, analysis, and statistics in cooperation with domestic and international policy makers, science and higher education actors. The Agricultural Statistics Pocketbook has been compiling reliable, current, and objective information on the development of the Hungarian agricultural economy for decades.

We trust that you will find our pocketbook useful this year as well, and that reading it will provide insightful information for all our readers.

EMPLOYMENT IN
AGRICULTURE

345k
employees



pages 12-21

AGRICULTURAL
OUTPUT

3,378.2bn
HUF



pages 22-45

INTERNATIONAL TRADE
BALANCE

(food industry products)

875.9bn
HUF



pages 68-77

SHEEP
POPULATION

887k
head



pages 78-91

**EMPLOYMENT IN
FOOD MANUFACTURING**

**86k
employees**



pages 46–57



**FOREST AREA
1.95mn
hectares**



pages 58–67



**MAZE
PRODUCTION**

**6,462k
tonnes**



pages 92–118

SUMMARY DATA ON THE AGRICULTURAL SUB-SECTORS



345k persons

Number of people employed
in agriculture in 2021



+7.8%

Monthly average gross earnings
of full-time employees
in agriculture, hunting, forestry and
fishing increased



2.9%

Agriculture's share of the national
economy



+14.6%

Gross output of agriculture and
food industry



+8.7%

Monthly average gross earnings of
employees in the
national economy increased



+41.1%

Combined investment in
machinery in agriculture and food
industry increased significantly

EMPLOYMENT BY SUB-SECTORS, 2021

181.2k persons



Agriculture

18.0k persons



Forestry

2.2k persons



Fishery

143.1k persons



Food industry

CONSTRUCTION INVESTMENT OUTLAY BY SUB-SECTORS, 2021

135,642mn HUF



Agriculture

9,333mn HUF



Forestry

557mn HUF



Fishery

143,557mn HUF



Food industry

NUMBER OF PEOPLE EMPLOYED^{a)}

The proportion of people employed in agriculture and food manufacturing was

7.4%

within the total number of people employed in 2021.

Denomination	2017	2018	2019	2020	2021
	thousand persons				
Number of employed total	4,548.4	4,606.4	4,644.6	4,603.2	4,634.6
Agriculture, forestry, fishery	222.4	217.4	212.7	213.9	201.4
Out of which: plant production, animal husbandry, farming and related services	197.1	191.5	191.1	193.0	181.2
Forestry	23.3	23.6	20.3	19.0	18.0
Fishery	2.0	2.3	1.3	2.0	2.2
Manufacture of food products, beverages and tobacco products	150.4	147.7	149.5	147.2	143.1
Priority sectors altogether	372.8	365.1	362.2	361.2	344.5
Other classified sectors total	4,175.6	4,241.3	4,282.4	4,242.2	4,290.0
Unclassified	2.3	3.3	5.2	4.0	0.0
	Percentage share, per cent				
Number of people employed total	100.0	100.0	100.0	100.0	100.0
Agriculture, forestry, fishery	4.9	4.7	4.6	4.6	4.3
Out of which: plant production, animal husbandry, farming and related services	4.3	4.2	4.1	4.2	3.9
Forestry	0.5	0.5	0.4	0.4	0.4
Fishery	0.04	0.05	0.03	0.04	0.05
Manufacture of food products, beverages and tobacco products	3.3	3.2	3.2	3.2	3.1
Priority sectors altogether	8.2	7.9	7.8	7.8	7.4
Other classified sectors total	91.8	92.1	92.2	92.2	92.6
Unclassified	0.1	0.1	0.1	0.1	0.0

^{a)} Due to low sample size, numbers between 2.5–5.0 thousand persons should be treated with caution, and numbers below 2.5 thousand persons should be disregarded.

Methodological change: from January 2021 onwards, in line with international regulations. In accordance with international regulations in addition to people working while receiving childcare allowance and childcare benefit also those workers are considered employed, who had worked only before receiving the childcare fee but receive a cash benefit during absence and are allowed to return to their previous workplace.

Source: Hungarian Central Statistical Office

STUDENTS IN HIGHER EDUCATION IN BACHELOR'S AND MASTER'S DEGREE PROGRAMS IN THE FIELD OF AGRICULTURE AND ALL FIELDS OF TRAINING

Academic year	Agriculture ^{a)}	All fields of training	Proportion of students in the field of agriculture, per cent
	number of students		
2015/2016	7,318	259,529	2.8
2016/2017	9,445	250,707	3.8
2017/2018	9,155	247,008	3.7
2018/2019	8,882	245,764	3.6
2019/2020	8,658	248,704	3.5
2020/2021	8,246	249,168	3.3
2021/2022	8,884	255,410	3.5

^{a)} Agriculture, forestry, fishery, veterinary sciences

Source: Hungarian Central Statistical Office, Ministry of Innovation and Technology

3.5%
of university/college students study in the field of agriculture.

NUMBER OF STUDENTS IN THE FIELD OF AGRICULTURE BY COUNTY^{a)}, 2021

In 2021, the proportion of students in the field of agriculture was the highest in Pest County

18.2%.

Regions	Number of students in adult education	Number of persons in student status
	people	
Pest	197	3,587
Central Hungary	197	3,587
Fejér	61	955
Komárom-Esztergom	2	388
Veszprém	20	596
Central Transdanubia	83	1,939
Győr-Moson-Sopron	86	1,127
Vas	47	1,117
Zala	-	31
Western Transdanubia	133	2,275
Baranya	71	593
Somogy	85	1,352
Tolna	9	595
Southern Transdanubia	165	2,540
Transdanubia	381	6,754
Borsod-Abaúj-Zemplén	287	925
Heves	44	638
Nógrád	-	264
Northern Hungary	331	1,827
Hajdú-Bihar	67	1,172
Jász-Nagykun-Szolnok	38	807
Szabolcs-Szatmár-Bereg	384	1,317
Northern Great Plain	489	3,296
Bács-Kiskun	143	1,723
Békés	308	1,087
Csongrád-Csanád	227	1,483
Southern Great Plain	678	4,293
Great Plain and North	1,498	9,416
Total	2,076	19,757

^{a)} The table shows the total number of students according to the Hungarian National Qualification Register and the Register of Vocational Occupations.

Source: National Office of Vocational Education and Training and Adult Learning

GROSS OUTPUT AND GROSS VALUE ADDED BY SUB-SECTORS

Denomination	2017	2018	2019	2020	2021 ^{a)}
	at current basic prices				
	Output, billion HUF				
National economy, total ^{a)}	77,134.1	85,143.9	93,864.4	93,587.8	109,365.2
Agriculture and fishery	3,009.3	3,156.5	3,321.7	3,494.7	4,012.1
Forestry	163.5	180.1	190.2	173.9	204.4
Manufacture of food products, beverages and tobacco products	3,371.1	3,585.1	3,841.9	4,042.6	4,620.9
Together	6,543.8	6,921.6	7,353.7	7,711.2	8,837.5
	Percentage distribution, per cent				
National economy, total ^{a)}	100.0	100.0	100.0	100.0	116.9
Agriculture and fishery	3.9	3.7	3.5	3.7	4.3
Forestry	0.2	0.2	0.2	0.2	0.2
Manufacture of food products, beverages and tobacco products	4.4	4.2	4.1	4.3	4.9
Together	8.5	8.1	7.8	8.2	9.4
	Gross value added (GVA), billion HUF				
National economy, total ^{a)}	33,309.0	36,641.9	40,257.8	40,860.5	46,646.4
Agriculture and fishery	1,474.5	1,512.6	1,588.7	1,641.9	1,849.2
Forestry	76.7	84.3	89.5	83.8	97.2
Manufacture of food products, beverages and tobacco products	705.4	787.3	807.7	856.2	902.7
Together	2,256.5	2,384.3	2,485.9	2,581.8	2,849.1
	Percentage distribution, per cent				
National economy, total ^{a)}	100.0	100.0	100.0	100.0	114.2
Agriculture and fishery	4.4	4.1	3.9	4.1	4.6
Forestry	0.2	0.2	0.2	0.2	0.2
Manufacture of food products, beverages and tobacco products	2.1	2.1	2.0	2.1	2.2
Together	6.8	6.5	6.2	6.4	7.1

^{a)} At basic price - sum of all branches.

Source: Hungarian Central Statistical Office

Gross output of agriculture grew by

14.6%

in 2021, according to preliminary data.

INVESTMENT OUTLAY BY SUB-SECTORS^{a)}

Agricultural investment outlay increased significantly by

16.0%

in 2021.

Branches	2017	2018	2019	2020	2021 ^{a)}
	at current prices, million HUF				
National economy, total	5,534,448	7,208,428	8,271,407	8,546,347	10,002,366
<i>Agriculture</i>	183,772	231,173	283,814	295,722	342,367
Growing of non-perennial crops	68,193	82,167	92,983	109,382	118,649
Growing of perennial crops	3,239	3,867	6,685	7,012	7,892
Plant propagation	2,661	3,517	2,659	2,086	4,841
Animal production	97,082	126,280	161,905	161,079	191,892
Mixed farming	1,317	1,250	1,767	1,593	1,927
Support activities to agriculture and post-harvest crop activities	11,213	14,018	17,711	14,491	17,108
Hunting, trapping and related service activities	67	75	104	78	58
<i>Forestry and logging</i>	11,245	9,761	11,471	11,942	19,074
Silviculture and other forestry activities	818	986	1,662	2,000	5,441
Logging	9,532	7,601	8,076	9,140	11,219
Support services to forestry	...	1,172	...	800	2,412
<i>Fishing and aquaculture</i>	1,084	1,141	1,263	1,387	1,089
Fishery	371	434	333	562	72
Aquaculture	713	708	930	824	1,017
<i>Food industry</i>	200,996	238,422	256,678	271,102	419,859
Together	397,096	480,497	553,226	580,153	782,390

^{a)} Data of enterprises with more than 4 employees, budgetary institutions, organisations operating in accordance with the budgetary law and non-profit organisations under observation. Based on quarterly data collection.

Source: Hungarian Central Statistical Office

CONSTRUCTION INVESTMENTS OUTLAY BY SUB-SECTORS^{a)}

Branches	2017	2018	2019	2020	2021 ^{a)}
	at current prices, million HUF				
National economy, total	2,459,780	3,587,488	4,208,814	4,525,437	5,275,077
<i>Agriculture</i>	38,769	68,094	111,632	113,378	135,642
Growing of non-perennial crops	14,259	26,512	37,999	46,946	50,327
Growing of perennial crops	333	1,040	2,912	2,941	4,277
Plant propagation	798	1,050	1,522	880	2,050
Animal production	21,657	36,068	62,628	57,195	72,848
Mixed farming	231	282	579	555	478
Support activities to agriculture and post-harvest crop activities	1,477	3,126	5,948	4,834	5,647
Hunting, trapping and related service activities	14	17	44	27	16
<i>Forestry and logging</i>	5,910	5,048	5,379	6,260	9,333
Silviculture and other forestry activities	249	146	312	768	2,811
Logging	5,593	4,876	5,040	5,423	6,339
Support services to forestry	...	26	...	69	183
<i>Fishing and aquaculture</i>	606	463	373	490	357
Fishery	263	163	94	241	18
Aquaculture	343	300	280	249	339
<i>Food industry</i>	65,022	70,262	71,254	93,026	143,557
Together	110,306	143,868	188,639	213,154	288,889

^{a)} Data of enterprises with more than 4 employees, budgetary institutions, organisations operating in accordance with the budgetary law and non-profit organisations under observation. Based on quarterly data collection.

Source: Hungarian Central Statistical Office

2.6%

of the construction investments are agricultural.

MACHINERY INVESTMENT OUTLAY BY SUB-SECTORS^{a)}

2.9%

of the total machinery investment belong to agriculture.

Branches	2017	2018	2019	2020	2021 ¹⁾
	at current prices, million HUF				
National economy, total	3,019,635	3,560,223	3,998,340	3,951,859	4,653,223
<i>Agriculture</i>	<i>93,325</i>	<i>106,896</i>	<i>111,016</i>	<i>116,515</i>	<i>137,074</i>
Growing of non-perennial crops	45,590	48,239	47,889	55,744	57,130
Growing of perennial crops	1,898	1,979	2,818	2,892	2,862
Plant propagation	1,709	2,375	1,065	1,118	2,531
Animal production	34,418	43,334	47,443	47,052	63,809
Mixed farming	895	767	962	845	1,010
Support activities to agriculture and post-harvest crop activities	8,769	10,149	10,785	8,816	9,695
Hunting, trapping and related service activities	47	53	53	47	37
<i>Forestry and logging</i>	<i>5,263</i>	<i>4,640</i>	<i>5,962</i>	<i>5,404</i>	<i>9,342</i>
Silviculture and other forestry activities	555	831	1,333	1,187	2,584
Logging	3,895	2,663	2,932	3,500	4,537
Support services to forestry	...	1,146	...	716	2,219
<i>Fishing and aquaculture</i>	<i>469</i>	<i>670</i>	<i>889</i>	<i>895</i>	<i>707</i>
Fishery	106	263	239	321	53
Aquaculture	363	407	650	573	654
<i>Food industry</i>	<i>134,766</i>	<i>165,334</i>	<i>183,575</i>	<i>176,370</i>	<i>275,135</i>
Together	233,824	277,540	301,442	299,183	422,257

^{a)} Data of enterprises with more than 4 employees, budgetary institutions, organisations operating in accordance with the budgetary law and non-profit organisations under observation. Based on quarterly data collection.

Source: Hungarian Central Statistical Office

AVERAGE MONTHLY GROSS AND NET EARNINGS OF FULL-TIME EMPLOYEES IN AGRICULTURAL SUB-SECTORS^{a)}

Denomination	2017	2018	2019	2020	2021 ^{*)}
	Gross earnings, HUF				
National economy	297,017	329,943	367,833	403,616	438,814
Agriculture, hunting, forestry, and fishing	230,638	255,664	293,207	320,185	345,040
Out of which: plant production, animal husbandry, farming and related services	236,845	257,221	294,343	322,922	345,010
Forestry	201,827	249,809	291,455	306,872	352,319
Fishery	183,518	210,758	233,087	255,147	279,628
Manufacture of food products, beverages, and tobacco products	259,094	286,250	324,591	356,130	380,725
	Net earnings, HUF				
National economy	197,516	219,412	244,609	268,405	291,812
Agriculture, forestry, hunting and fishing	153,374	170,016	194,983	212,923	229,452
Out of which: plant production, animal husbandry, farming and related services	157,502	171,052	195,738	214,743	229,432
Forestry	134,213	166,122	193,818	204,070	234,292
Fishery	122,040	140,156	155,003	169,673	185,953
Manufacture of food products, beverages, and tobacco products	172,298	190,357	215,853	236,826	253,182

^{a)} Data of enterprises with more than 5 employees and full scale data of the administration social security and non-profit organisations.

Source: Hungarian Central Statistical Office

Average net earnings of full-time employees in agriculture, forestry, hunting and fishing increased by

7.8 %.

AGRICULTURE



3,378.2bn HUF

Hungary's agricultural output in 2021



+2.3%

Increase in fertilizer sales volume



+3,3%

The value of pesticide turnover increased



+45.0%

The average purchase price of sunflower increased



+46.2%

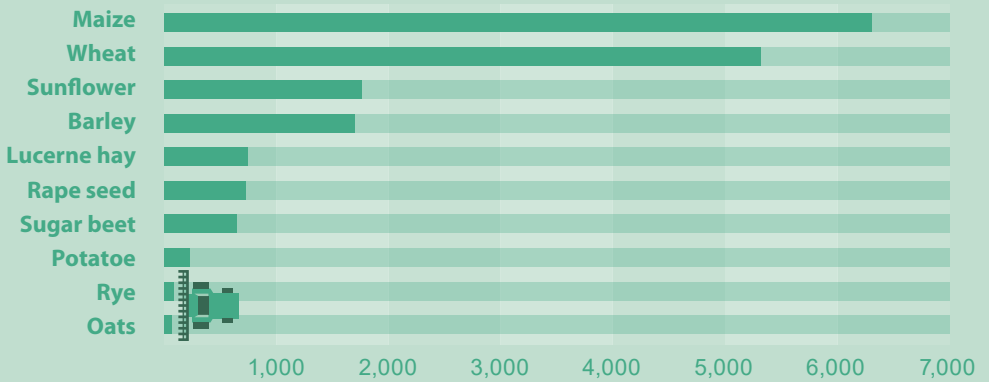
The average purchase price of maize grew



+2.6%

The agricultural area increased

YIELD OF MAJOR CROPS, 2021 (thousand tonnes)



LIVESTOCK POPULATIONS AT 1ST DECEMBER 2021

887k head



Sheep

902k head



Cattle

2,726k head



Pig

32,114k head



Hen

AREA BY LAND USE^{a)} 1ST JUNE

Increase in
the area of grassland
by

2.6%.

Land use	Average of 2012–2016	2017	2018	2019	2020	2021 ^{*)}
	thousand hectares					
Arable land	4,329	4,334	4,334	4,318	4,037	4,145
Garden	77	47	45	39	3	3
Orchard	93	93	94	94	87	84
Vineyard	80	73	71	68	62	62
Grassland	765	804	799	790	733	755
Agricultural area	5,344	5,352	5,344	5,310	4,922	5,049
Forest	1,936	1,939	1,940	1,940
Reed	62	42	35	35
Fishpond	37	37	37	35
Productive land area	7,379	7,370	7,356	7,319
Uncultivated land area	1,924	1,933	1,948	1,984
Land area, total	9,303	9,303	9,303	9,303

^{a)} Due to methodological change in data collection, only the data on agricultural area (arable land, kitchen garden, orchard, vineyard, grasslands) have been available since 2020. From 2020 onwards, the comparability of data with previous years is limited due to changes in economic thresholds.

Source: Hungarian Central Statistical Office

MAIN ENERGY SOURCES IN FORESTRY AND AGRICULTURE

In 2020 biogas use in
forestry and
agriculture increased
by

75.0%

compared to the
previous year.

Denomination	2017	2018	2019	2020
Coal (thousand tonnes)	1	2	3	3
Natural gas (million cu.m.)	147	131	157	181
Gasoline (thousand tonnes)	4	4	3	3
Diesel oil (thousand tonnes)	328	371	369	379
Fuel oil (thousand tonnes)	0.10	0.10	0.05	0.03
Electricity (million kWh)	904	994	1,022	1,024
Firewood, wood products, wood waste and other vegetable materials (thousand tonnes)	46	44	42	35
LPG (thousand tonnes)	21	17	21	26
Derived heat (terajoule)	17	15	16	15
Biogas (terajoule)	42	33	16	28
Geothermal energy (terajoule)	1,546	1,782	1,762	1,626

Source: Hungarian Energy and Public Utility Regulatory Authority

SALE AND USE OF FERTILIZERS^{a)}

Year	Nitrogenous	Phosphorous	Potassium	Total
	fertilizer in active ingredients			
	Sale thousand tonnes			
2017	424	118	116	659
2018	424	117	111	652
2019	416	114	100	630
2020	445	112	97	655
2021	450	112	107	670
	kg per hectare of agricultural area ^{b)}			
2017	79	22	22	123
2018	79	22	21	122
2019	78	22	19	119
2020	90	23	20	133
2021	89	22	21	133

Active amount of nitrogen fertiliser was

89 kg per hectare

of agricultural area.

^{a)} Direct sales of agricultural input retailers for the agricultural and forestry sector.

^{b)} Due to a methodological change, from 2020 onwards the data collection only includes data of data providers reaching the economic threshold.

Source: Hungarian Central Statistical Office, Institute of Agricultural Economics

FARMS' USE OF INORGANIC FERTILIZERS^{a)}

Year	Total	Of which:			
		arable land	orchards	vineyards	grasslands
	Fertilized area, thousand hectares				
2017	2,961.6	2,908.2	30.2	10.0	13.2
2018	2,984.7	2,933.6	26.9	9.4	14.7
2019	3,056.3	3,011.3	24.4	6.4	14.1
2020
2021	3,550.0	3,490.4	24.1	11.7	23.9
	Total amount of fertiliser used in active substance, thousand tonnes				
2017	1,210.8	1,194.8	9.6	3.8	2.7
2018	1,217.7	1,202.2	9.3	3.4	2.9
2019	1,160.8	1,147.9	7.9	2.3	2.8
2020
2021	1,296.6	1,278.5	8.0	3.7	6.4
	Amount per hectare of area fertilised, kg				
2017	408.8	410.8	317.0	378.1	204.6
2018	408.0	409.8	345.1	358.7	197.7
2019	379.8	381.2	322.3	351.7	200.5
2020
2021	365.2	366.3	334.7	319.3	266.8

Farms used fertilizer on more than

3.5 million hectares

in 2021.

^{a)} Due to a methodological change, from 2020 onwards the data collection only includes data of data providers reaching the economic threshold, therefore the comparability of data with previous years is limited.

Source: Hungarian Central Statistical Office

FARMS' USE OF ORGANIC FERTILIZERS^{a)}

Solid manure was used
on nearly

250
thousand
hectares

in 2021.

Year	Denomination	Total	Arable land	Orchard	Vineyard
Area with organic fertilizer, hectare					
2017		209,427	189,593	5,969	3,088
2018		200 751	183,150	4,949	3,437
2019 ^{b)}	Total solid farmyard manure	190,824	174,714	3,755	2,076
2020 ^{c)}	
2021		243,043	226,031	4,124	3,146
Area with slurry, hectare					
2017		46,115	44,548	115	24
2018		43,292	42,590	257	42
2019 ^{b)}	Total slurry	45,025	44,261	194	65
2020 ^{c)}	
2021		73,756	71,536	165	142
Quantity of used organic fertilizer, tonnes					
2017		3,858,729	3,560,464	117,855	66,579
2018		3,867,516	3,681,348	46,416	70,005
2019 ^{b)}	Total solid farmyard manure	3,657,096	3,475,321	44,994	47,117
2020 ^{c)}	
2021		3,786,774	3,630,173	52,125	37,952
Quantity of used organic fertilizer, m ³					
2017		2,294,199	2,233,294	4,722	60
2018		2,427,469	2,374,703	5,347	2,706
2019 ^{b)}	Total slurry	2,467,332	2,397,756	9,137	3,535
2020 ^{c)}	
2021		3,237,399	3,159,711	4,898	5,941
Quantity of organic fertilizer used per hectare, tonnes/hectare					
2017		18.4	18.8	19.7	21.6
2018		19.3	20.1	9.4	20.4
2019 ^{b)}	Total solid farmyard manure	19.2	19.9	12.0	22.7
2020 ^{c)}	
2021		15.6	16.1	12.6	12.1
Quantity of slurry application per hectare, m ³ /hectare					
2017		49.7	50.1	41.1	2.5
2018		56.1	55.8	20.8	64.6
2019 ^{b)}	Total slurry	54.8	54.2	47.1	54.6
2020 ^{c)}	
2021		43.9	44.2	29.6	42.0

^{a)} The data refer to farming year.

^{b)} In 2019 the data refer to calendar year.

^{c)} Due to a methodological change, from 2020 onwards the data collection only includes data of data providers reaching the economic threshold, therefore the comparability of data with previous years is limited.

Forrás: Hungarian Central Statistical Office

RAW MATERIALS USED FOR THE PRODUCTION OF COMPOUND FEED^{a)}

Denomination	2018	2019	2020	2021 ^{a)}
	thousand tonnes			
Total cereal grains	2,326	2,315	2,338	2,400
Total oil seeds and their progenies (incl. protected)	292	304	319	341
Total protein crops and their progenies (incl. protected)	569	568	540	548
Total secondary products of manufacturing	320	338	358	382
Total fats, oils	52	49	55	55
Total concentrated protein carrier	11	8	11	11
Total feed supplements and materials of mineral origin	212	197	204	218
Total product of mixed fodder	3,782	3,779	3,825	3,956

^{a)} The table contains rounded figures and therefore the sum of individual data may differ from the grand total.

Source: Institute of Agricultural Economics

The production of mixed fodder increased by

3.4%

in 2021.

MANUFACTURE OF COMPOUND FEED FOR LIVESTOCK

Denomination	2018	2019	2020	2021 ^{a)}
	thousand tonnes			
Poultry total	1,943	1,913	1,868	1,997
Pig	1,319	1,342	1,399	1,382
Cattle ^{a)}	377	380	428	433
Other ruminants	43	41	42	41
Fish and other	99	101	88	103
Total product of mixed fodder	3,782	3,779	3,825	3,956

^{a)} Fodder seeds.

Source: Institute of Agricultural Economics

In 2021,
34.9%
of mixed fodder was pig feed.

SALES OF PESTICIDE^{a)}

The value of pesticide sales increased by

3.3%

in Hungary.

Year	Total	Insecticide	Fungicide	Herbicide	Other chemicals
Sale, thousand tonnes					
2017	29,557	5,024	5,446	9,325	9,762
2018	26,065	4,008	5,076	8,647	8,334
2019	26,778	4,953	5,061	8,840	7,924
2020	29,244	5,544	5,540	9,162	8,998
2021	28,315	5,183	4,998	9,145	8,989
Sale, million HUF					
2017	108,790	18,332	29,846	50,270	10,342
2018	99,859	15,699	27,712	45,551	10,897
2019	104,529	18,310	28,921	47,708	9,590
2020	117,116	21,643	32,575	51,474	11,424
2021	121,012	21,765	31,554	55,797	11,896

^{a)} Agricultural input sales directly to farmers.

Source: Institute of Agricultural Economics, Hungarian Central Statistical Office

PRODUCTION OF MAIN CROPS

Denomination	Average of 2012–2016"	2017	2018	2019	2020	2021
Harvested area, thousand hectares						
Wheat	1,069	966	1,026	1,016	937	891
Rye	34	26	26	26	26	26
Barley	287	268	244	247	261	266
Oats	47	37	23	22	26	21
Maize	1,157	989	939	1,028	981	1,043
Sugar-beet	17	19	16	14	13	12
Sunflower seed	610	695	617	564	613	653
Rape seed	211	303	331	301	310	256
Lucerne hay	142	194	193	213	205	256
Potatoes	20	15	12	11	10	9
Total production, thousand tonnes						
Wheat	5,053	5,246	5,258	5,378	5,121	5,316
Rye	94	87	88	91	84	82
Barley	1,267	1,416	1,146	1,383	1,484	1,699
Oats	127	95	59	70	77	66
Maize	7,239	6,739	7,977	8,278	8,414	6,301
Sugar-beet	994	1,172	958	823	780	645
Sunflower seed	1,566	2,022	1,830	1,707	1,698	1,761
Rape seed	632	932	1,003	912	877	722
Lucerne hay	640	971	1,013	1,028	921	742
Potatoes	497	341	304	290	270	228
Yields, kg per hectare						
Wheat	4,734	5,430	5,120	5,290	5,470	5,970
Rye	2,804	3,290	3,370	3,490	3,200	3,180
Barley	4,388	5,280	4,690	5,590	5,680	6,390
Oats	2,702	2,540	2,620	3,230	2,990	3,150
Maize	6,336	6,820	8,490	8,060	8,580	6,040
Sugar-beet	59,552	62,830	60,770	58,490	60,440	53,020
Sunflower seed	2,570	2,910	2,970	3,030	2,770	2,700
Rape seed	2,950	3,080	3,030	3,030	2,830	2,810
Lucerne hay	4,454	5,020	5,240	4,820	4,500	3,790
Potatoes	23,062	21,490	22,220	23,590	23,380	22,910

Source: Hungarian Central Statistical Office

The harvested area of wheat decreased by

4.9%.

VITICULTURE AND FRUIT GROWING

The vineyards decreased by

7.4%

in 2020.

Denomination	Average of 2012–2016	2017	2018	2019	2020
Viticulture					
Total vineyard, thousand hectares	80	73	71	68	63
Productive vineyard, thousand hectares	71	67	66	65	60
Average yield (on productive vineyard), kg/hectare	6,144	7,900	8,070	7,040	7,300
Total production, thousand tonnes	432	530	533	457	435
Of which: table grapes, thousand tonnes	13	12	11	10	8
Wine (drawn off once), million litres	276	358	355	306	307
Fruit growing					
Total area of orchard, thousand hectares	92	94	94	94	89
Productive orchard, thousand hectares	82	83	83	84	80
Total production, thousand tonnes	849	723	925	733	575
Out of which: apple	606	474	679	498	399
pears	25	23	26	22	20
sour cherry	73	70	84	63	61
plum and greengage	46	43	47	45	27
apricot	20	24	14	25	11
peach	35	37	23	28	12

Source: Hungarian Central Statistical Office

LIVESTOCK^{a)}

The cattle population decreased by

3.3%

in 2021.

Denomination	Average of 2012–2016	2017	2018	2019	2020	2021
		1 st December, thousand heads				
Farms, total						
Cattle, total	803	870	885	909	933	902
Of which: cows	359	395	403	412	414	420
Pigs, total	3,032	2,870	2,872	2,634	2,850	2,726
Of which: breeding sows	193	172	178	155	164	157
Sheep, total	1,183	1,146	1,109	1,061	944	887
Hen	30,906	31,844	30,658	30,874	28,888	32,114

^{a)} Due to a methodological change, from 2020 onwards the data collection only includes data of data providers reaching the economic threshold, therefore the comparability of data with previous years is limited.

Source: Hungarian Central Statistical Office

PRODUCTION OF ANIMALS FOR SLAUGHTER AND ANIMAL PRODUCTS

Denomination	Average of 2012–2016	2017	2018	2019	2020	2021
Animals for slaughter, total (thousand tonnes)	1,436	1,496	1,602	1,632	1,587	1,678
Out of which: cattle for slaughter	82	91	99	103	106	109
pigs for slaughter	559	571	583	589	560	578
sheep for slaughter	19	19	20	20	20	21
poultry for slaughter	745	783	869	889	876	944
Fish (thousand tonnes)	19	21	23	21	21	21
Cow milk production (million litres)	1,815	1,916	1,898	1,911	1,961	2,079
Hen eggs production (million pieces)	2,476	2,441	2,539	2,578	2,541	2,541
Wool (ton)	3,829	3,744	3,712	3,672	3,553	3,161

Source: Hungarian Central Statistical Office, Institute of Agricultural Economics

Production of animals for slaughter was

5.7%

more than a year earlier.

LIVE ANIMALS FOR SLAUGHTER IN SLAUGHTERHOUSES

Denomination	2017	2018	2019	2020	2021
	thousand heads				
Cattle	106	112	112	106	109
Pigs	4,756	4,705	4,620	4,701	4,869
Sheep	35	46	46	38	48
Poultry	200,716	217,024	220,888	217,059	233,485
Out of which: chicken for slaughter	167,808	168,903	173,781	181,365	185,936
goose for slaughter	4,637	5,790	6,305	3,410	4,275
duck for slaughter	18,808	33,845	33,251	24,121	33,869
turkey for slaughter	6,896	6,843	7,054	7,029	6,493

Source: Institute of Agricultural Economics

Slaughtering of pig increased by

3.6%

compared to 2020.

MAIN INDICATORS OF LIVESTOCK PRODUCTION

Pig production per capita in 2021 was

59.4 kg

according to preliminary data.

Denomination	2017	2018	2019	2020	2021 ⁽¹⁾
	kg				
Cattle for slaughter					
per cow	233	251	251	256	262
per capita	9.3	10.1	10.5	10.8	11.2
Pigs for slaughter					
per sow	3,263	3,275	3,506	3,394	3,546
per capita	58.3	59.6	60.3	57.3	59.4
Sheep for slaughter					
per capita	1.9	2.0	2.0	2.0	2.2
Poultry for slaughter					
per capita	79.9	88.9	91.0	89.7	97
Milk production, litres					
per cow	7,820	7,809	7,833	8,241	..
per capita	195.6	194.1	195.5	200.7	213.6
Eggs production, pieces					
per hen	227	233	240	248	..
per capita	249	260	264	260	261
Wool production					
per sheep	3.6	3.6	3.7	3.7	3.7
per capita	0.4	0.4	0.4	0.4	0.3

Source: Hungarian Central Statistical Office

USE OF BIOMASS FOR ENERGY

Raw materials	2020	2021
	Quantity used, tonnes	
Total forestry feedstock	1,261,813	1,590,175
Total forestry by-product	...	15,667
Total herbaceous plant fuel material	260,144	207,916
Total products from agriculture	871,060	734,803
Total products from processing industry	813,898	751,394
Total household, institutional raw materials	175,046	...
Total other materials not mentioned elsewhere	116,480	213,631
Total	3,527,818	3,650,954

From the use of biomass for energy the share of forestry feedstock was

43.6%.

Source: Institute of Agricultural Economics

TERMS OF TRADE

Denomination	2017	2018	2019	2020	2021
	previous year = 100.0				
Producer price index	105.6	102.7	105.4	107.4	119.3
Price indices of inputs	100.0	105.1	103.9	101.0	117.1
Intermediate consumption	99.4	105.1	103.6	100.2	118.9
Seeds	95.7	108.4	105.9	103.0	106.9
Energy	105.7	107.4	100.8	95.3	117.7
Fertilizers	93.5	103.8	107.9	91.3	158.0
Chemicals	100.4	101.3	102.9	101.0	107.1
Fodder	96.8	105.7	103.0	102.1	126.5
Maintenance of machines	102.6	103.6	104.2	106.5	107.4
Maintenance of buildings	105.5	109.8	110.1	109.1	114.1
Veterinary products	101.9	101.4	105.9	106.2	105.4
Other costs	101.5	103.1	103.5	102.8	104.9
Agricultural investments	103.1	105.7	105.0	106.1	107.8
Machines	100.7	103.8	102.2	105.7	106.0
Buildings	105.9	109.4	109.6	107.2	110.8
Terms of trade^{a)}	105.6	97.7	101.4	106.2	101.9

Terms of trade was

101.9%

in 2021.

^{a)} According to EUROSTAT methodology industry/agriculture price scissors equal to producer price index divided by the input price index.

Source: Hungarian Central Statistical Office

AGRICULTURAL PRODUCER PRICE INDICES

The producer price index of cereals increased by

58.3%

compared to 2015.

Goods	2018	2019	2020	2021 ^{a)}
	2015 = 100.0			
Crop products	102.9	107.2	119.1	152.0
• Cereals	105.0	105.1	114.1	158.3
• Vegetables	113.0	128.1	133.4	139.7
• Fruits ^{a)}	97.8	105.7	138.9	143.1
• Live animals and animal products	105.2	113.3	114.6	119.2
• Agricultural products total	103.7	109.4	117.4	140.1
	Previous year = 100.0			
Crop products	106.8	101.8	110.1	136.3
• Cereals	109.8	100.1	108.6	138.7
• Vegetables	115.9	113.4	104.2	104.7
• Fruits ^{a)}	86.3	108.0	131.5	103.0
• Live animals and animal products	97.8	107.7	101.2	104.1
• Agricultural products total	102.7	105.4	107.4	119.3

^{a)} Grape included.

Source: Hungarian Central Statistical Office

VOLUME INDICES OF SALES OF AGRICULTURAL PRODUCTS^{a)}

The volume index of fruit sales was

111.5%

compared to the previous year.

Goods	2017	2018	2019	2020	2021 ^{a)}
	2000 = 100.0				
Crop and horticultural products	139.2	148.4	149.5	148.7	136.5
• Cereals	140.4	145.8	158.0	171.3	149.5
• Vegetables	111.0	98.6	98.9	98.7	103.9
• Fruits	64.3	73.2	47.9	42.8	47.7
• Live animals and animal products	100.5	100.8	101.0	101.7	106.9
• Agricultural products total	117.9	122.4	123.0	123.1	120.9
	Previous year = 100.0				
Crop and horticultural products	90.4	106.6	100.7	99.5	91.8
• Cereals	89.2	103.8	108.4	108.4	87.3
• Vegetables	110.7	88.9	100.3	99.8	105.2
• Fruits	88.1	113.8	65.4	89.4	111.5
• Live animals and animal products	96.1	100.3	100.2	100.7	105.2
• Agricultural products total	92.9	103.8	100.5	100.1	98.2

^{a)} Purchase data.

Source: Hungarian Central Statistical Office

AVERAGE PRICES OF MAIN PRODUCTS

Denomination	2017	2018	2019	2020	2021 ^{a)}
Wheat (HUF per ton)	43,650	48,971	50,733	54,802	72,548
Barley (HUF per ton)	36,142	43,199	44,142	44,544	59,039
Maize (HUF per ton)	43,662	46,111	43,823	49,808	72,823
Sunflower seed (HUF per ton)	100,006	97,213	100,736	122,363	177,427
Rape seed (HUF per ton)	111,856	107,934	116,168	125,972	174,896
Potatoes (HUF per ton)	69,731	80,348	114,611	93,893	106,122
White cabbage (HUF per kg)	66	87	109	94	103
Onions dry (HUF per kg)	63	91	130	102	105
Green beans (HUF per kg)	73	76	88	82	88
Green peas (shelled weight) (HUF per kg)	86	87	94	103	123
Tomatoes (HUF per kg)	64	62	107	113	139
Green pepper (HUF per kg)	207	254	301	323	300
Apple (HUF per kg)	61	26	47	59	37
Pears (HUF per kg)	116	113	149	192	165
Apricots (HUF per kg)	121	215	122	234	270
Peaches (HUF per kg)	67	77	66	87	153
Wine-grapes (HUF per kg)	90	86	75	86	96
Pigs for slaughter ^{a)} (HUF per kg)	403	363	445	440	386
Cattle for slaughter (together with veal calves) (HUF per kg)	410	414	413	429	483
Poultry for slaughter (HUF per kg)	292	295	298	288	323
Cow milk (HUF per litre)	96	97	102	107	114
Hen eggs for consumption (HUF per piece)	23	24	24	25	27

^{a)} Without calf for slaughter

Source: Hungarian Central Statistical Office

In 2021, the purchase price of maize increased by

46.2%

compared to 2020.

AVERAGE MARKET PRICES^{a)} (1/2)

The average market price of garlic was

HUF 2,003
per kg

in 2021.

Denomination	2017	2018	2019	2020	2021 ^{a)}
	HUF per kg				
Crop products					
Bean (dry)	1,185	1,232	1,258	..	1,437
Pea (dry)	662	702	727	..	879
Lentil (for consumption)	795	818	872	..	934
Poppy seed (for consumption)	1,464	1,639	2,096	..	2,088
Potato (for consumption)	161	194	245	..	250
Vegetables					
White cabbage	181	244	285	..	304
Kohlrabi	517	567	589	..	628
Carrot	252	347	373	..	374
Parsley root	623	852	1,078	..	984
Radish	651	692	771	..	907
Onion	178	231	309	..	300
Garlic	1,771	1,657	1,712	..	2,003
Lettuce	488	535	483	..	505
Spinach	871	1,024	1,115	..	1,183
Cucumber	318	360	390	..	479
Squash	190	240	267	..	329
Cantaloupe	257	335	314	..	399
Watermelon	133	169	184	..	227
Green beans	639	749	846	..	1,164
Green peas in the shell	527	848	678	..	858
Tomato	437	529	593	..	637
Sweet corn	410	481	617	..	674
Mushroom (cultivated)	658	693	802	..	943
Green pepper	422	499	555	..	645

^{a)} Average offer prices.

Due to the COVID-19 pandemic, data collection has been suspended in April, May, and June 2020, thus annual data are not available.

Source: Hungarian Central Statistical Office

AVERAGE MARKET PRICES^{a)} (2/2)

Denomination	2017	2018	2019	2020	2021 ^{c)}
	HUF per kg				
	Fruits				
Apple	254	274	264	..	397
Pears	424	464	536	..	639
Cherry	723	717	896	..	1,094
Sour cherry	488	477	668	..	778
Plum and greengage	342	326	324	..	469
Apricot	474	724	485	..	1,076
Peach	346	532	409	..	812
Walnut (in the shell)	848	933	1,036	..	1,167
Chestnut	1,118	1,231	1,418	..	1,639
Gooseberry	1,039	914	923	..	1,255
Currants	960	1,085	1,265	..	1,426
Raspberry	1,921	2,076	2,698	..	3,260
Strawberry	1,276	1,247	1,332	..	1,844
Table grapes	496	505	513	..	710
	Animal products				
Cow milk (HUF per litre) ^{b)}	207	211	205	..	–
Hen eggs (HUF per piece)	43	44	41	..	48
Honey	1,922	1,925	1,947	..	2,436

^{a)} Average offer prices.

^{b)} From January 2021, cow milk has not been included in the observed products.

Due to the COVID-19 pandemic, data collection was suspended in April, May, and June 2020, thus annual data are not available.

Source: Hungarian Central Statistical Office

In 2021, the average market price of apricot was

HUF 1,076

kilogram, one kilo of raspberries was

HUF 3,260

on average according to preliminary data.

ANNUAL AVERAGE CONSUMER PRICES OF SELECTED GOODS

The average consumer price of white bread was

12.6%

higher in 2021 than a year earlier.

Goods	2017	2018	2019	2020	2021
	HUF				
Pork, loin (kg)	1,470	1,470	1,580	1,790	1,700
Pork, leg, without bone and hoof (kg)	1,220	1,210	1,340	1,530	1,440
Beef, shoulder, with bone, kg	1,910	1,960	2,050	2,260	2,470
Chicken ready to cook (kg)	659	678	684	718	764
Chicken leg (kg)	626	631	631	659	710
Chicken wings (kg)	545	577	587	626	691
Sausage "Gyulai" type (kg)	3,270	3,380	3,570	4,010	4,090
"Párizsi" cold cuts (kg)	1,360	1,440	1,570	1,900	1,910
Fresh eggs (10 pieces)	390	430	400	430	460
Milk, pasteurized ESL, 2,8 per cent fat content (litre) ^{a)}	216	250	243	263	270
Trappista cheese (kg)	1,680	1,700	1,760	1,890	2,010
Sour cream 20 per cent fat content 140-175 grams plastic cup (piece)	141	154	163	171	177
Lard, 400-500 g (except mangalica)	358	389	383	448	463
Fat bacon (kg)	1,480	1,530	1,620	1,900	1,970
Sunflower oil (litre)	489	488	486	517	675
Flour prime quality (kg)	137	145	158	172	192
Rice unpolished (kg)	318	323	345	390	432
Bread, white (kg)	279	294	309	356	401
Bread, half-brown (kg)	237	250	280	316	351
Sugar, white granulated (kg)	266	207	209	240	258
Roasted coffee, ground (200-250 gram pack)	729	718	696	698	733
White table wine, 1.5-2 litres (bottle)	565	574	571	586	615
Beer lager, 0.4-0.5 litres (bottle)	194	203	214	222	229
Fruit flavoured spirits, 0.2 litres (bottle) ^{b)}	826	865	963	1,050	1,120
Cigarettes "Sopianae" multifilter short 20 pieces (box) ^{c)}	1,080	1,150	1,260	1,390	1,640

^{a)} Until 2017 pasteurised fresh milk.

^{b)} From 2018 onwards not less than 30 per cent alcoholic strength.

^{c)} Until 2017 19 pieces.

Source: Hungarian Central Statistical Office

SALES OF AGRICULTURAL MACHINERY

Denomination	2017	2018	2019	2020	2021
	Sales, piece ^{a)}				
Wheeled tractors	2,958	3,160	3,100	3,053	3,383
Grain combines	307	262	254	242	252
Soil cultivation machinery	5,432	5,571	5,464	5,126	6,050
Ploughs	766	692	617	694	670
Disc cultivators	844	906	899	805	843
Seedbed makers	684	594	513	547	626
Seeders and planters	1,073	1,025	915	904	1,104
Conventional seed drill	266	222	202	157	209
Precision seeder	434	383	398	435	517
Nutrient recovery machines	1,395	1,245	1,093	1,000	1,162
Solid fertilizer spreaders	1,239	1,000	957	883	997
Organic fertilizer spreaders	96	191	87	83	126
Plant protection and care machines	1,283	1,675	1,174	1,165	1,270
Field sprayers	750	804	749	821	929
Harvester headers	463	415	324	382	335
Corn headers	199	165	170	194	180
Sunflower headers	215	199	109	161	114
Forage harvesters	1,763	1,783	1,693	1,370	1,493
Balers	479	753	520	338	442
	Sales, million HUF				
Wheeled tractors	53,416	58,691	62,541	69,520	78,649
Grain combines	21,822	20,210	20,757	22,447	26,256
Soil cultivation machinery	18,571	19,769	21,077	23,060	27,409
Seeders and planters	9,423	9,887	10,079	10,499	14,213
Nutrient recovery machines	2,916	3,976	3,361	3,103	4,422
Plant protection and care machines	8,011	10,120	10,507	11,046	9,905
Harvester headers	3,934	3,759	4,458	4,263	4,325
Forage harvesters	3,203	4,074	3,859	2,979	4,368
Balers	4,702	5,790	5,453	3,854	6,067

^{a)} Excluding sales of second-hand machinery, resales, and sales abroad, both within and outside the EU.

Source: Institute of Agricultural Economics

The value of seeders and planters sold increased by

35.4%

in 2021.

COSTS AND RETURNS OF WHEAT AND MAIZE PRODUCTION

Prime cost of maize was

HUF 34
thousand

per tonne in 2020.

Denomination	Average values of the main undertakings producing goods					
	Wheat			Maize		
	2018	2019	2020	2018	2019	2020
Production cost (HUF/ha)	238,203	254,462	265,657	292,662	305,689	323,327
Average yield (tonnes/ha)	5.48	5.76	5.88	9.49	9.02	9.47
Prime cost (HUF/tonnes)	43,001	43,707	44,832	30,820	33,877	34,133
Sales price (HUF/tonnes)	47,730	50,792	52,602	45,243	44,086	49,863
Average revenue ^{a)} (HUF/tonnes)	4,729	7,085	7,771	14,423	10,209	15,729
Economic outturn of the sector ^{b)} (HUF/ha)	101,431	118,102	133,746	211,934	174,442	235,037
Sectoral economic outturn per HUF 100 production cost (HUF)	42.58	46.41	50.35	72.42	57.07	72.69

^{a)} Without subsidies.

^{b)} Including subsidies.

Source: Institute of Agricultural Economics

COSTS AND RETURNS OF SUNFLOWER AND RAPE PRODUCTION

The cost of rape production per hectare decreased by

1.9%.

Denomination	Average values of the main undertakings producing goods					
	Sunflower			Rape		
	2018	2019	2020	2018	2019	2020
Production cost (HUF/ha)	253,423	268,166	272,549	292,227	309,954	303,962
Average yield (tonnes/ha)	3.07	3.03	2.92	3.22	3.23	2.86
Prime cost (HUF/tonnes)	82,426	88,794	93,447	90,627	95,970	106,414
Sales price (HUF/tonnes)	94,275	102,749	119,281	107,906	115,234	123,985
Average revenue ^{a)} (HUF/tonnes)	11,849	13,955	25,834	17,279	19,264	17,571
Economic outturn of the sector ^{b)} (HUF/ha)	110,055	122,255	161,288	128,460	141,867	136,254
Sectoral economic outturn per HUF 100 production cost (HUF)	43.43	45.59	59.18	43.96	45.77	44.83

^{a)} Without subsidies.

^{b)} Including subsidies.

Source: Institute of Agricultural Economics

COSTS AND RETURNS OF SWEETCORN AND GREEN PEA PRODUCTION

Denomination	Average values of the main undertakings producing goods					
	Sweetcorn			Green pea		
	2018	2019	2020	2018	2019	2020
Production cost (HUF/ha)	538,781	518,057	522,739	437,070	404,771	508,609
Average yield (tonnes/ha)	16.19	16.50	15.97	4.49	4.92	5.34
Prime cost (HUF/tonnes)	33,279	31,402	32,719	97,448	82,277	95,195
Sales price (HUF/tonnes)	35,370	37,117	42,330	74,862	89,826	94,200
Average revenue ^{a)} (HUF/tonnes)	2,091	5,716	9,611	-22,586	7,549	-994
Economic outturn of the sector ^{b)} (HUF/ha)	177,992	244,426	312,053	5,821	149,689	138,769
Sectoral economic outturn per HUF 100 production cost (HUF)	33.04	47.18	59.70	1.33	36.98	27.28

^{a)} Without subsidies.

^{b)} Including subsidies.

Source: Institute of Agricultural Economics

The production cost of green peas increased by

25.7%

per hectare.

COSTS AND RETURNS OF APPLE AND SOUR CHERRY PRODUCTION

Denomination	Average values of the main undertakings producing goods					
	Apple			Sour cherry		
	2018	2019	2020	2018	2019	2020
Production cost (HUF/ha)	1,095,356	1,086,464	964,164	766,171	822,511	900,235
Average yield (tonnes/ha)	41.00	25.99	19.98	10.01	7.41	7.40
Prime cost (HUF/tonnes)	26,717	41,804	48,251	76,539	110,984	121,642
Sales price (HUF/tonnes)	44,274	63,612	95,019	114,910	188,645	170,507
Average revenue ^{a)} (HUF/tonnes)	17,556	21,807	46,769	38,371	77,661	48,865
Economic outturn of the sector ^{b)} (HUF/ha)	1,104,644	953,538	1,323,255	686,973	904,761	659,078
Sectoral economic outturn per HUF 100 production cost (HUF)	100.85	87.77	137.24	89.66	110.00	73.21

^{a)} Without subsidies.

^{b)} Including subsidies.

Source: Institute of Agricultural Economics

The cost of producing sour cherry increased by

9.4%

per hectare.

COSTS AND RETURNS OF DAIRY COW AND TABLE EGG PRODUCTION

Prime cost of egg was

HUF 21.6 per piece

in 2020.

Denomination	Average values of the main undertakings producing goods					
	Dairy cow			Table egg		
	2018	2019	2020	2018	2019	2020
Production cost (HUF/individual) ^{a)}	824,603	864,995	812,549	6,060	6,154	5,819
Average yield (litre/cow, egg/hen)	8,530	8,589	8,372	314	274	270
Prime cost (HUF/litre, HUF/piece)	91.23	95.69	92.50	19.32	22.48	21.57
Sales price (HUF/litre, HUF/piece)	95.14	99.34	106.38	25.03	26.04	25.40
Average revenue ^{b)} (HUF/litre, HUF/piece)	3.91	3.65	13.88	5.71	3.56	3.83
Economic outturn of the sector ^{c)} (HUF/individual) ^{a)}	240,841	267,127	334,793	2,256	1,287	587
Sectoral economic outturn per HUF 100 production cost (HUF)	29.21	30.88	41.20	37.23	20.91	10.09

^{a)} Per annual average number of heads of animals.

^{b)} Without subsidies.

^{c)} Including subsidies.

Source: Institute of Agricultural Economics

COSTS AND RETURNS OF PIG AND CHICKEN FATTENING

The production cost of pig fattening increased by

9.1%

per head.

Denomination	Average values of the main undertakings producing goods					
	Pig fattening			Chicken fattening		
	2018	2019	2020	2018	2019	2020
Production cost (HUF/individual) ^{a)}	126,894	122,607	133,737	4,642	4,358	5,075
Average yield (kg/day)	0.66	0.70	0.70	0.05	0.05	0.05
Prime cost (HUF/kg)	384	381	405	242	246	263
Sales price (HUF/kg)	365	448	426	257	261	262
Average revenue per unit ^{b)} (HUF/kg)	-18.3	66.6	20.6	14.8	15.3	-0.5
Economic outturn of the sector ^{c)} (HUF/individual) ^{a)}	-2,263	36,734	12,995	499	446	262
Sectoral economic outturn per HUF 100 production cost (HUF)	-1.78	29.96	9.72	10.76	10.23	5.16

^{a)} Per annual average number of heads of animals.

^{b)} Without subsidies.

^{c)} Including subsidies.

Source: Institute of Agricultural Economics

ECONOMIC ACCOUNTS FOR AGRICULTURE

Denomination	2017	2018	2019	2020	2021 ⁽¹⁾
	Current price, million HUF				
Cereals (including seeds)	617,927	713,753	748,422	821,489	1,002,555
Industrial crops (including pulses)	388,759	346,372	342,611	378,995	510,205
Forage plants	64,478	71,634	71,262	77,650	82,099
Grapes, fruits	173,323	159,616	147,287	163,911	187,209
Wine	39,919	35,076	35,827	29,190	29,190
Vegetables and horticultural products	221,504	228,810	254,582	266,657	250,216
Potatoes (including seeds)	21,496	24,630	28,684	24,248	22,411
Other crop products	14,560	13,488	17,418	20,882	21,953
Crop output, total	1,503,168	1,553,957	1,616,117	1,734,829	2,069,515
Animals	617,896	656,448	706,587	707,650	752,501
Animal products	290,953	289,620	292,138	296,303	337,238
Animal output, total	908,849	946,068	998,725	1,003,953	1,089,740
Agricultural goods output	2,412,017	2,500,025	2,614,842	2,738,782	3,159,255
Agricultural services	134,015	142,413	154,712	165,011	172,766
Inseparable non-agricultural secondary activities	47,206	45,119	50,520	46,170	46,170
Agricultural output total	2,593,237	2,687,557	2,820,074	2,949,963	3,378,191
Total intermediate consumption	1,493,163	1,587,473	1,670,836	1,748,873	2,014,230
Gross value added at basic prices	1,100,074	1,100,084	1,149,238	1,201,090	1,363,962
Net value added at basic prices	1,215,423	1,215,439	1,244,963	1,326,234	1,464,732
Operating surplus / Mixed income	829,566	816,714	818,720	880,508	1,009,279
Entrepreneurial income	716,457	695,674	687,284	739,453	863,442

Source: Hungarian Central Statistical Office, Institute of Agricultural Economics

In 2021, the combined share of crop and horticultural products of total agricultural output was

61.3%.

AGRICULTURAL LABOUR INPUT

Denomination	2017	2018	2019	2020	2021 ⁽¹⁾
	Annual Working Unit				
Total	421,415	391,601	358,891	337,561	325,578
Salaried	128,567	124,261	118,068	114,974	114,543
Non-salaried	292,848	267,339	240,823	222,587	211,035

Source: Hungarian Central Statistical Office, Institute of Agricultural Economics

Salaried agricultural labour input decreased by

3.5%.

AGRICULTURAL INCOME INDICES

Real value of the net entrepreneurial income was

109.5%

compared to the previous year (Indicator 'C').

Denomination	2017	2018	2019	2020	2021 ¹⁾
	previous year = 100.0				
'A' index	101.5	102.6	106.7	106.9	109.4
'C' index	98.7	94.6	96.4	105.5	109.5

Source: Hungarian Central Statistical Office, Institute of Agricultural Economics

VOLUME INDICES OF AGRICULTURAL OUTPUT AND GROSS VALUE ADDED

The volume index of agricultural output for grapes, fruits was the highest,

112.8%

Denomination	2017	2018	2019	2020	2021 ¹⁾
	previous year = 100.0				
Cereals (including seeds)	85.1	106.7	105.0	99.6	88.7
Industrial crops (including pulses)	107.2	93.0	91.6	97.4	96.5
Forage plants	91.0	107.7	104.9	94.6	91.6
Grapes, fruits	100.8	111.6	89.2	85.0	112.8
Vegetables and horticultural products	100.3	89.4	99.4	99.3	95.8
Potatoes (including seed tuber)	78.7	89.9	95.6	90.1	84.6
Other crop products	93.2	96.5	106.5	102.9	100.0
Crop output total	94.8	100.7	99.3	97.6	93.7
Animals	96.0	109.4	101.2	97.5	104.8
Animal products	104.4	99.8	97.8	98.1	104.2
Animal output total	98.3	106.3	100.2	97.7	104.6
Agricultural goods output	96.0	102.8	99.6	97.6	97.7
Agricultural services	100.1	102.4	103.0	101.3	100.0
Inseparable non-agricultural secondary activities	80.9	93.0	106.0	86.6	100.0
Agricultural output total	95.9	102.6	99.9	97.6	97.9
Total intermediate consumption	98.4	101.4	101.6	102.8	100.0
Gross value added at basic prices	92.3	104.2	97.5	90.0	94.7

Source: Hungarian Central Statistical Office, Institute of Agricultural Economics

AGRICULTURAL INSURANCE PREMIUMS

Denomination	2017	2018	2019	2020	2021
	received fee, million HUF				
Crop insurance total	13,301.3	13,213.4	13,715.8	15,983.9	19,208.0
Crop insurance without premium subsidy	2,845.0	2,616.2	2,081.8	1,754.4	1,462.3
Crop insurance with premium subsidy	10,456.3	10,597.2	11,634.0	14,229.5	17,745.7
<i>Premium subsidy - Category 'A'</i>	4,754.5	4,300.8	5,288.8	6,496.5	9,301.6
<i>Premium subsidy - Category 'B'</i>	3,601.7	3,883.9	1,593.5	1,933.4	2,069.1
<i>Premium subsidy - Category 'C'</i>	1,667.8	2,005.8	4,376.6	4,639.7	5,848.6
Livestock insurance total	603.8	604.2	540.3	645.7	669.2
Forest insurance total	7.8	10.5	3.1	10.0	9.9
Property and liability insurance total	1,382.1	1,429.3	1,469.7	1,808.4	2,154.4
Agricultural insurances total	15,294.9	15,257.4	15,728.9	18,447.9	22,041.5

Source: Institute of Agricultural Economics

Crop insurance premiums increased by

20.2%

in 2021.

AGRICULTURAL INSURANCE CLAIM PAYMENTS

Denomination	2017	2018	2019	2020	2021
	claims payments, million HUF				
Crop insurance total	9,669.1	4,837.4	6,603.7	5,868.7	9,694.0
Crop insurance without premium subsidy	1,999.7	847.3	858.7	431.7	532.0
Crop insurance with premium subsidy	7,669.4	3,990.1	5,745.0	5,437.0	9,131.0
<i>Premium subsidy - Category 'A'</i>	1,627.7	401.6	1,203.2	2,055.2	3,132.0
<i>Premium subsidy - Category 'B'</i>	1,330.1	373.9	533.3	416.7	609.0
<i>Premium subsidy - Category 'C'</i>	651.7	403.3	904.2	650.5	1,887.0
Livestock insurance total	237.8	166.1	249.7	159.5	166.0
Forest insurance total	0.5	0.0	0.0	0.0	0.0
Property and liability insurance total	701.9	441.7	681.8	604.9	437.0
Agricultural insurances total	10,609.3	5,445.2	7,535.2	6,633.1	10,297.0

Source: Institute of Agricultural Economics

Crop insurance claim payments increased by

65.2%

in 2021

FOOD INDUSTRY



2,551

In 2021 the number of food processing enterprises with more than 5 employees



+7.3%

Gross average earnings increased in the food industry



+54.9%

Investments in the food industry increased



+10.3%

The total loan portfolio of the food industry increased



+3.7%

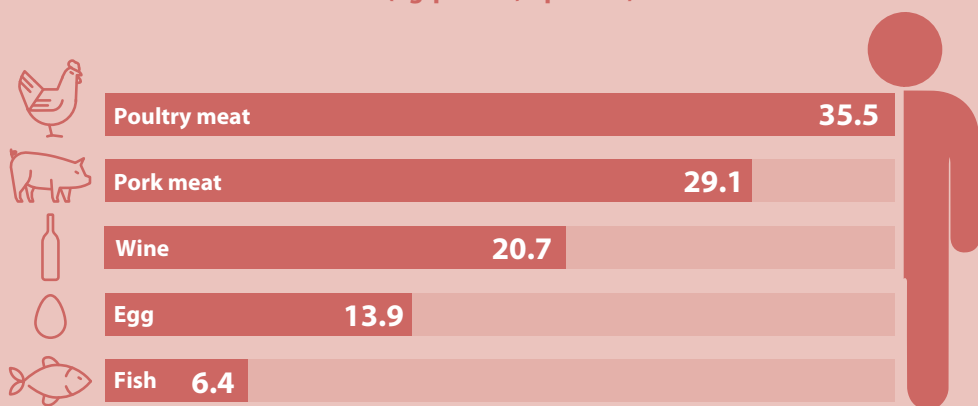
The number of people employed in food industry increased



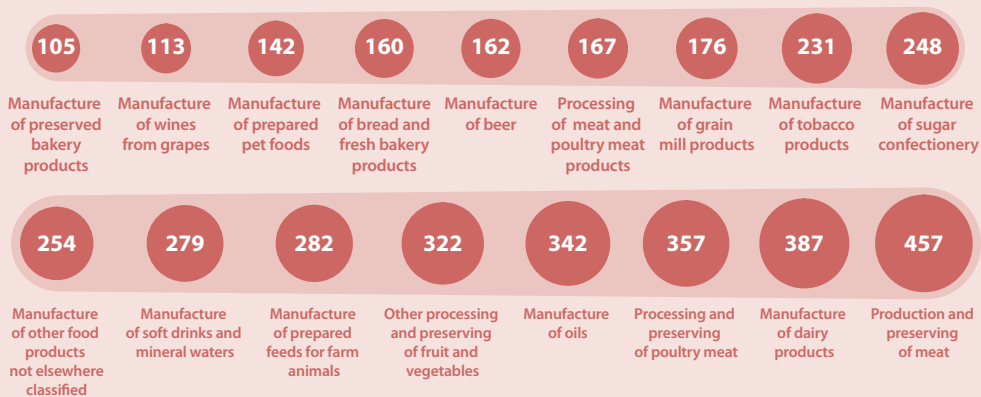
636k HUF

The average gross earnings were the highest in the vegetable and animal oils manufacturing sector

PER CAPITA AMOUNTS OF FOOD AVAILABLE, 2020 (kg/person; l/person)



NET SALES REVENUE IN KEY SUB-SECTORS OF FOOD INDUSTRY IN 2020 (billion HUF)



REGISTERED FOOD PROCESSING ENTERPRISES BY SUB-SECTORS^{a)}

The number of enterprises engaged in the manufacture of food, beverages and tobacco products decreased by

3.4%.

Denomination	Number of enterprises				
	2017	2018	2019	2020	2021
Manufacture of food, beverages and tobacco products	2,659	2,619	2,704	2,640	2,551
Manufacture of food	2,285	2,248	2,294	2,223	2,163
Manufacture of beverages	368	366	406	413	384
Production and preserving of meat	218	209	205	184	170
Processing and preserving of poultry meat	87	86	85	90	88
Production of meat and poultry meat products	58	64	63	69	69
Processing and preserving of fruit and vegetables	195	206	226	222	214
Manufacture of dairy products	44	46	43	45	45
Manufacture of grain mill products	64	62	64	61	59
Manufacture of prepared animal feed	91	87	88	86	86
Manufacture of bread and fresh bakery products	1,082	1,041	1,043	1,004	987
Manufacture of sugar confectionery	101	99	103	103	100
Manufacture of distilled spirits	47	52	60	56	49
Manufacture of wines from grapes	198	190	214	234	210
Manufacture of beer	21	24	23	22	24
Manufacture of soft drinks and mineral waters	89	84	87	83	83
Manufacture of tobacco products	6	5	5	-	-

^{a)} Data from enterprises with at least 5 employees.

Source: Hungarian Central Statistical Office

PEOPLE EMPLOYED IN SUB-SECTORS OF FOOD INDUSTRY^{a)}

Denomination	2017	2018	2019	2020	2021 ⁴⁾
	persons				
Manufacture of food products	83,987	85,952	85,740	82,934	85,971
Production and preserving of meat, processing of meat products	23,589	24,550	24,581	23,581	23,710
Out of which					
Processing and preserving of meat	7,371	8,196	7,640	7,189	6,997
Processing and preserving of poultry-meat	9,695	9,831	10,843	10,422	10,647
Processing of meat and poultry-meat products	6,523	6,523	6,098	5,970	6,066
Processing and preserving of fish	49	51	132
Processing and preserving of fruit and vegetables	7,850	8,180	8,029	7,975	8,085
Processing of vegetable and animal oils	1,032	998	1,001	988	1,040
Manufacture of dairy products	6,711	6,920	7,026	6,883	7,007
Manufacture of grain mill products and starch	2,163	2,683	2,767	2,798	2,775
Manufacture of bakery and pasta products	27,044	26,173	25,385	23,954	25,284
Out of which					
Manufacture of bread; fresh bakery products	21,025	20,077	18,914	17,612	18,272
Manufacture of preserved bakery products	4,416	4,377	4,897	4,702	5,413
Manufacture of pasta products	1,603	1,719	1,574	1,640	1,599
Manufacture of other food products	9,153	9,863	10,310	9,901	10,829
Out of which					
Manufacture of sugar	252	251	243
Manufacture of sugar confectionery	2,656	3,368	3,333	2,962	2,626
Manufacture of prepared animal feeds	6,439	6,539	6,590	6,804	7,109
Manufacture of beverages	9,921	10,080	10,326	10,125	10,428
Out of which					
Manufacture of wines from grapes	3,539	3,496	3,540	3,378	3,502
Manufacture of beer	1,744	1,773	1,818	1,813	1,847
Manufacture of soft drinks, production of mineral waters	3,343	3,523	3,736	3,824	3,928
Manufacture of tobacco products	1,430	1,585	1,311	1,410	1,352
Manufacture of food products, beverages and tobacco products	95,338	97,618	97,377	94,470	97,750

^{a)} Data from enterprises with at least 5 employees.. Until 2018, number of employees (full-time or at least 60 working hours per week), from 2019 average number of employees.

Source: Hungarian Central Statistical Office

In 2021,
86 thousand people
were employed in the
food industry.

GROSS AVERAGE EARNINGS OF EMPLOYEES IN SUB-SECTORS OF FOOD INDUSTRY^{a)}

In the food industry in 2021 the average gross earnings were the highest in the **vegetable and animal oils** manufacturing sector.

Denomination	2017	2018	2019	2020	2021
	HUF				
• Manufacture of food products	247,399	274,654	312,823	342,743	367,908
• Production and preserving of meat, processing of meat products	223,790	255,757	283,827	307,014	338,150
• Out of which					
• Processing and preserving of meat	211,978	242,743	262,887	294,726	341,379
• Processing and preserving of poultry-meat	218,425	255,324	287,195	303,257	331,563
• Processing of meat and poultry-meat products	248,531	275,514	307,854	333,288	347,374
• Processing and preserving of fish	326,308	340,208	345,690
• Processing and preserving of fruit and vegetables	250,755	277,137	317,782	347,926	369,438
• Processing of vegetable and animal oils	465,553	502,801	564,482	600,913	635,919
• Manufacture of dairy products	276,573	302,539	337,677	368,464	391,161
• Manufacture of grain mill products and starch	312,889	350,069	406,164	458,744	482,804
• Manufacture of bakery and pasta products	203,004	221,011	257,988	278,176	301,116
• Out of which					
• Manufacture of bread and fresh bakery products	181,261	196,670	228,428	245,942	260,023
• Manufacture of preserved bakery products	261,293	283,876	328,848	348,012	388,191
• Manufacture of pasta products	267,062	289,875	333,650	355,066	387,653
• Manufacture of other food products	270,131	299,532	336,591	367,108	390,903
• Out of which					
• Manufacture of sugar	465,757	498,967	513,241
• Manufacture of sugar confectionery	236,055	269,089	305,423	331,489	335,325
• Manufacture of prepared animal feeds	358,065	383,864	445,511	486,650	517,569
• Manufacture of beverages	343,701	373,287	407,270	439,813	463,338
• Out of which					
• Manufacture of wines from grapes	238,069	267,817	290,763	312,286	331,664
• Manufacture of beer	437,705	484,208	519,049	557,561	559,570
• Manufacture of soft drinks, production of mineral waters	408,575	424,099	461,310	490,454	531,092
• Manufacture of tobacco products	308,329	332,387	409,683	492,149	515,702
• Manufacture of food products, beverages and tobacco products	259,094	286,250	324,591	356,130	380,725

^{a)} Data from enterprises with at least 5 employees. From 2019, the average gross earnings of full-time employees (HUF/person/month).

Source: Hungarian Central Statistical Office

NET AVERAGE EARNINGS OF EMPLOYEES IN SUB-SECTORS OF FOOD INDUSTRY^{a)}

Denomination	2017	2018	2019	2020	2021
	HUF				
Manufacture of food products	164,521	182,645	208,028	227,924	244,659
Production and preserving of meat, processing of meat products	148,821	170,079	188,745	204,164	224,870
Out of which					
Processing and preserving of meat	140,966	161,424	174,820	195,993	227,017
Processing and preserving of poultry-meat	145,253	169,791	190,985	201,666	220,489
Processing of meat and poultry-meat products	165,273	183,217	204,723	221,637	231,004
Processing and preserving of fish	216,995	226,239	229,884
Processing and preserving of fruit and vegetables	166,753	184,296	211,325	231,371	245,676
Processing of vegetable and animal oils	309,592	334,362	375,380	399,607	422,886
Manufacture of dairy products	183,921	201,188	224,555	245,029	260,122
Manufacture of grain mill products and starch	208,072	232,796	270,099	305,065	321,064
Manufacture of bakery and pasta products	134,997	146,973	171,562	184,987	200,242
Out of which					
Manufacture of bread and fresh bakery products	120,538	130,787	151,904	163,551	172,915
Manufacture of preserved bakery products	173,760	188,778	218,684	231,428	258,147
Manufacture of pasta products	177,598	192,767	221,878	236,119	257,790
Manufacture of other food products	179,637	199,189	223,833	244,127	259,951
Out of which					
Manufacture of sugar	309,728	331,813	341,305
Manufacture of sugar confectionery	156,978	178,944	203,106	220,441	222,991
Manufacture of prepared animal feeds	238,114	255,269	296,265	323,623	344,184
Manufacture of beverages	228,564	248,236	270,835	292,476	308,120
Out of which					
Manufacture of wines from grapes	158,318	178,099	193,358	207,671	220,557
Manufacture of beer	291,074	321,998	345,168	370,778	372,114
Manufacture of soft drinks, production of mineral waters	271,704	282,025	306,771	326,152	353,176
Manufacture of tobacco products	205,038	221,037	272,439	327,279	342,942
Manufacture of food products, beverages and tobacco products	172,298	190,357	215,853	236,826	253,182

^{a)} Data from enterprises with at least 5 employees. From 2019, the average net earnings of full-time employees (excluding benefits (HUF/person/month)).

Source: Hungarian Central Statistical Office

In the food industry in 2021 the average monthly net earnings were the lowest in the **bread and fresh bakery** products manufacturing sector.

VOLUME INDICES OF GROSS OUTPUT IN BRANCHES OF FOOD INDUSTRY^{a)}

The largest volume growth was in **manufacturing of distilled spirits** in 2021.

Denomination	2017	2018	2019	2020	2021 ^{a)}
	previous year = 100.0				
Manufacture of food, beverages and tobacco products	101.1	104.3	105.5	94.3	109.3
Out of which					
Production and preserving of meat	108.7	100.4	104.0	97.8	113.3
Processing and preserving of poultry meat	89.0	114.0	105.1	93	112.3
Production of meat and poultry meat products	92.5	105.8	104.5	87.8	113.3
Processing and preserving of fruit and vegetables	104.1	98.4	103.8	101.5	107.9
Manufacture of dairy products	104.8	98.7	103.3	105.6	102.8
Manufacture of grain mill products	108.8	102.0	99.5	102.7	103.5
Manufacture of prepared animal feeds	98.0	102.9	106.6	104.4	106.2
Manufacture of bread and fresh bakery products	97.4	93.8	92.1	98.2	97.1
Manufacture of sugar confectionery	88.2	132.4	91.7	91.7	106.9
Manufacture of distilled spirits	91.0	131.9	85.3	109.8	119.6
Manufacture of wines from grapes	103.6	98.6	135.6	93.9	107
Manufacture of beer	103.6	112.2	100.4	85.7	107.8
Manufacture of soft drinks and mineral waters	106.6	113.1	104.2	91.9	113.8
Manufacture of tobacco products	101.3	117.1	91.9	114.9	112.4

^{a)} Data for industrial enterprises with more than 4 employees.

Source: Hungarian Central Statistical Office

INVESTMENTS OF FOOD PROCESSING ENTERPRISES^{a)}

Denomination	2017	2018	2019	2020	2021 ^{a)}
	at current prices, million HUF				
Manufacture of food, beverages and tobacco products	200,996	238,422	256,678	271,102	419,859
Out of which					
Processing and preserving of meat, fish, crustaceans and molluscs	9,243	7,156	10,348	13,192	16,645
Processing and preserving of poultry meat	23,481	31,928	23,346	16,173	22,128
Processing and preserving of fruit and vegetables	14,799	17,395	18,655	23,450	30,368
Operation of dairies and cheese making	10,398	27,049	20,939	19,279	19,626
Manufacture of grain mill products	2,775	4,223	5,875	5,518	10,828
Manufacture of prepared animal feeds	24,483	14,789	16,013	28,083	80,397
Manufacture of cocoa, chocolate and sugar confectionery	4,722	5,639	6,316	5,392	6,959
Distilling, rectifying and blending of spirits	1,304	2,978	3,772	2,308	4,788
Manufacture of wines from grape	4,931	13,457	15,179	13,313	29,524
Manufacture of beer	4,825	7,519	8,178	9,414	9,645
Manufacture of soft drinks; production of mineral waters and other bottled waters	17,270	18,763	24,116	21,645	31,514
Manufacture of tobacco products	5,450	8,379	7,321	...	19,170

^{a)} Based on quarterly data collection. Data of enterprises with more than 4 employees and budgetary institutions, organisations operating in accordance with the budgetary law and non-profit organisations under observation.

Source: Hungarian Central Statistical Office

Among the food, beverages and tobacco production sectors, the largest investment was made in the production of prepared **animal feed** sector in 2021.

THE MAIN FINANCIAL RESULTS OF THE FOOD INDUSTRY BY SUB-SECTORS

The **soft drink and mineral waters production** sector had the highest profit before tax among the food industry sub-sectors in 2020.

Denomination	Number of enterprises (No.)		Operating results (million HUF)		Earnings/ Results before taxes (million HUF)	
	2019	2020	2019	2020	2019	2020
Production and preserving of meat	288	283	-1,771	13,507	-2,771	11,123
Processing and preserving of poultry meat	119	105	12,603	5,170	10,944	2,365
Processing of meat and poultry meat products	57	55	8,698	9,152	8,897	9,452
Processing and preserving of fish	10	10	-289	-210	-287	-201
Processing and preserving of potatoes	11	9	428	345	408	309
Manufacture of fruit and vegetable juice	74	74	2,381	1,600	2,361	1,451
Other processing and preserving of fruit and vegetables	374	367	16,821	20,810	14,915	17,916
Manufacture of oils and fats	50	49	17,256	24,931	15,107	11,671
Manufacture of dairy products	80	77	8,023	12,426	7,911	12,607
Manufacture of ice cream	41	41	-576	-68	-575	-85
Manufacture of grain mill products	89	82	5,854	8,252	5,574	8,886
Manufacture of starch products	7	10	10,395	19,232	9,965	16,851
Manufacture of bread and fresh bakery products	951	935	6,839	7,230	6,577	7,052
Manufacture of preserved bakery products	87	88	5,316	5,061	5,028	5,058
Manufacture of pasta products	125	117	2,254	3,663	1,972	3,476
Manufacture of sugar	7	6	560	661	-580	-104
Manufacture of sugar confectionery	203	189	10,123	8,143	9,506	6,396
Processing of tea and coffee	36	37	661	600	659	608
Manufacture of condiments and seasonings	46	42	1,989	2,105	1,816	2,048
Manufacture of prepared meals and dishes	43	49	1,133	3,616	1,156	3,509
Manufacture of homogenised food preparations and dietetic food	27	28	1,236	1,031	1,190	930
Manufacture of other food products nec	220	217	5,843	16,420	1,574	15,587
Manufacture of prepared feeds for farm animals	100	93	7,909	4,957	7,823	3,914
Manufacture of prepared pet foods	42	41	8,198	9,594	8,948	13,991
Manufacture of distilled spirits	319	313	3,541	1,907	3,296	1,689
Manufacture of wines from grapes	646	619	7,283	10,457	6,421	9,773
Manufacture of cider and other fruit wines	14	16	143	-9	118	-15
Manufacture of other non-distilled fermented beverages	10	8	-16	-2	-18	-2
Manufacture of beer	91	87	8,693	-149	7,876	-914
Manufacture of malt
Manufacture of soft drinks and mineral waters	231	228	21,172	22,789	19,957	18,779
Manufacture of tobacco products	8	7	10,672	17,861	8,605	17,810
Total	4,407	4,283	184,323	232,000	165,289	202,860

Source: National Tax and Customs Administration of Hungary, corporate tax declaration data

THE MAIN FINANCIAL RESULTS OF THE FOOD INDUSTRY BY SUB-SECTORS, 2020

Denomination	Number of enterprises (No.)	Net sales revenue (Billion HUF)	Balance sheet total (Billion HUF)	Equity (Billion HUF)
Production and preserving of meat	283	456.67	242.56	106.35
Processing and preserving of poultry meat	105	357.02	279.29	93.91
Processing of meat and poultry meat products	55	167.02	147.63	69.65
Processing and preserving of fish	10	0.99	2.38	-0.29
Processing and preserving of potatoes	9	3.38	3.16	1.01
Manufacture of fruit and vegetable juice	74	62.54	62.30	39.39
Other processing and preserving of fruit and vegetables	367	322.35	329.05	163.65
Manufacture of oils and fats	49	342.02	230.01	43.01
Manufacture of dairy products	77	387.39	254.71	123.42
Manufacture of ice cream	41	2.02	2.34	0.47
Manufacture of grain mill products	82	176.41	133.63	59.94
Manufacture of starch products	10	160.10	221.77	64.74
Manufacture of bread and fresh bakery products	935	160.05	131.30	55.75
Manufacture of preserved bakery products	88	105.30	80.88	41.19
Manufacture of pasta products	117	58.78	62.23	32.52
Manufacture of sugar	6	25.02	34.00	23.03
Manufacture of sugar confectionery	189	248.14	171.67	47.86
Processing of tea and coffee	37	9.46	7.38	2.83
Manufacture of condiments and seasonings	42	38.53	42.79	18.42
Manufacture of prepared meals and dishes	49	33.48	21.76	10.13
Manufacture of homogenised food preparations and dietetic food	28	16.42	13.07	7.25
Manufacture of other food products nec	217	254.21	197.74	81.80
Manufacture of prepared feeds for farm animals	93	281.65	182.38	69.00
Manufacture of prepared pet foods	41	141.85	124.82	34.90
Manufacture of distilled spirits	313	45.47	46.61	23.00
Manufacture of wines from grapes	619	112.52	289.95	159.72
Manufacture of cider and other fruit wines	16	0.58	2.66	1.66
Manufacture of other non-distilled fermented beverages	8	0.02	0.20	0.18
Manufacture of beer	87	162.45	81.63	24.35
Manufacture of malt
Manufacture of soft drinks and mineral waters	228	278.63	255.67	90.87
Manufacture of tobacco products	7	230.66	130.99	56.00
Total	4,283	4,652.35	3,793.25	1,551.38

Source: National Tax and Customs Administration of Hungary, corporate tax declaration data

The **meat processing and preservation** sector had the highest net sales revenue among the food industry sub-sectors in 2020.

CONSUMPTION PER CAPITA^{a)}

Within per capita meat consumption, pork meat consumption was

40.1%

in 2020.

Denomination	Average of 2012-2016	2017	2018	2019	2020
	kg				
	Yearly consumption				
Meat, meat products	60.2	71.2	75.8	76.5	72.5
Out of which: pork	26.1	30.4	32.9	33.1	29.1
beef and veal	2.6	3.1	3.3	3.6	3.6
edible offal	2.1	2.1	1.9	2.0	2.0
poultry meat	27.1	33.5	35.4	35.7	35.5
Fish ^{b)}	5.0	6.4	6.6	6.5	6.4
Milk and dairy products ^{c)}	159.0	165.5	166.2	175.3	170.1
Eggs	12.9	13.8	13.9	14.1	13.9
Fats and oils	35.0	37.3	38.4	39.6	38.4
Out of which: lard	11.1	12.2	12.2	12.3	12.0
Flour	80.9	85.0	85.7	85.6	87.8
Rice	4.4	5.4	5.9	6.3	6.5
Sugar	29.5	33.0	32.7	32.9	33.0
Potatoes	60.8	56.8	58.3	56.0	59.3
Vegetables, fruits ^{d)}	193.4	200.8	205.1	200.8	189.9
Wine (litre)	24.3	24.8	24.6	21.0	20.7
Beer (litre)	67.1	67.8	70.4	72.7	68.7
Tobacco	1.4	1.2	1.3	1.3	1.3
Coffee	2.2	2.6	2.7	2.7	2.7
Tea (dag)	20.0	21.5	18.8	19.5	14.9
	Daily energy and nutrient intakes				
Kilojoule	12,756	13,691	14,020	14,214	14,049
proteins (gram)	96.9	106.5	109.8	110.9	109.6
Out of which: animal proteins (gram)	55.4	62.7	65.4	66.5	64.0
Fat (gram)	137.6	149.0	154.4	158.6	153.1
Carbohydrates (gram)	359.2	380.2	384.4	385.1	389.9

^{a)} Available data.

^{b)} The quantity of fish is measured in live weight from 2015. Source: Institute of Agricultural Economics.

^{c)} Processed products expressed in fresh product weight.

^{d)} Vegetables, domestic and tropical fruits. The processed products are calculated in fresh weight.

Source: Hungarian Central Statistical Office

TOTAL STOCK OF LOANS OF THE FOOD INDUSTRY

Denomination	2020	2021
	million HUF	
Production and preserving of meat	63,354	54,560
Processing and preserving of poultry meat	52,530	68,161
Processing of meat and poultry meat products	14,863	9,893
Manufacture of fruit and vegetable juice	2,981	4,315
Other processing and preserving of fruit and vegetables	83,553	93,774
Manufacture of oils and fats	42,072	50,060
Manufacture of dairy products	21,409	34,167
Manufacture of grain mill products	46,633	61,692
Manufacture of bread and fresh bakery products	20,757	32,977
Manufacture of pasta products	14,548	13,940
Manufacture of preserved bakery products	4,150	6,105
Manufacture of prepared feeds for farm animals	38,296	40,805
Manufacture of prepared pet foods	4,333	2,147
Manufacture of wines from grapes	31,928	35,941
Manufacture of other food products nec	175,057	171,159
Food industry total	616,467	679,697

The total stock of loans of the food industry increased by

10.3%.

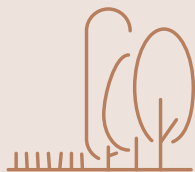
Source: Ministry of Agriculture

FORESTRY, FISHERY



1.95mn hectares

the area of forests in Hungary in 2021



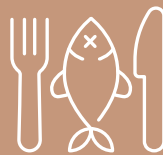
7.5mn m³

wood production



+13.7%

increase in
firewood yield



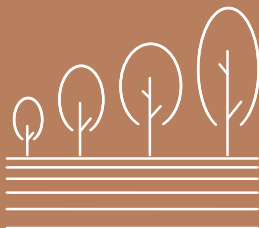
13.6k tons

fresh water fish farming for
food in ponds



111k head

number of deers shot



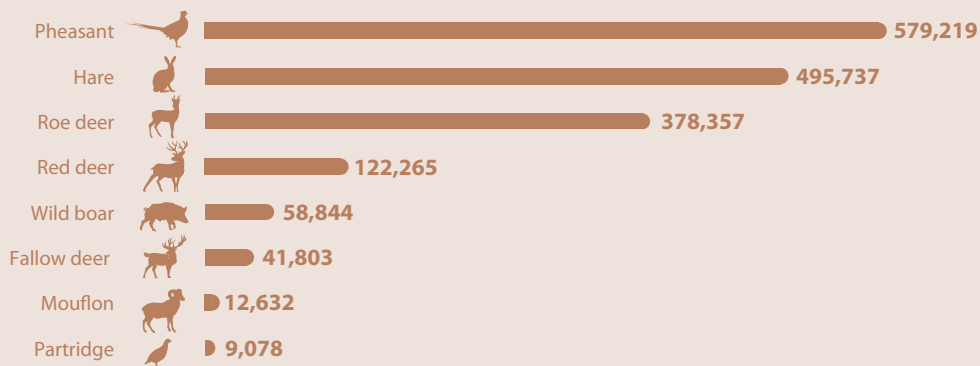
+194.5%

Increase in
afforestation

FOREST LAND OWNERSHIP, 2021



ESTIMATED STOCK OF GAMES, 2022 (heads)



FOREST AREA, FOREST AS PERCENTAGE OF LAND AREA

The area of privately owned forests increased by

0.4%.

Denomination	2017	2018	2019	2020	2021
	thousand hectares				
1. Land area, total	9,303	9,303	9,303	9,303	9,303
2. Area registered in the National Forestry Database	2,057	2,069	2,067	2,071	2,078
2.1. Areas with forest management plans	2,057	2,055	2,054	2,057	2,064
2.1.1. Area of forest subcompartments	1,940	1,939	1,939	1,942	1,948
2.1.2. Non-forested areas serving forest management purposes (roads, glades etc.)	117	116	116	115	115
2.2. Forests without forest management plans	-	14	13	14	14
Out of 2.1:					
state forests	1,155	1,155	1,155	1,155	1,158
community owned forests	21	21	20	20	20
private forests	881	880	879	882	886
Forest as % of land area ^{a)}	21	21	21	21	21

^{a)} Calculated from the sum of the area of woodlands and the area under private afforestation.

Source: National Land Centre, Forestry Department

FORESTATION

Denomination	2017	2018	2019	2020	2021
	hectares				
	Reforestation				
State foresters	9,868	9,562	9,256	8,603	8,797
Other foresters	9,962	8,866	9,279	9,616	9,610
Total	19,830	18,428	18,535	18,220	18,407
	Afforestation				
State foresters	0	8	38	173	127
Other foresters	626	1,293	1,549	2,285	7,112
Total	626	1,301	1,587	2,458	7,238

Source: National Land Centre, Forestry Department

State foresters started reforestation at a rate

2.3%

higher than in 2020.

LOGGING

Denomination	2017	2018	2019	2020	2021
	thousand m ³				
Gross above-ground wood mass	7,576	7,767	7,315	6,580	7,523
Net above-ground wood mass	6,317	6,481	6,174	5,533	6,621
Out of which: Industrial wood	2,862	3,038	2,892	2,457	3,125
Firewood	3,454	3,443	3,282	3,076	3,497

Source: National Land Centre, Forestry Department

Firewood logging was

3.5 million m³

in 2021.

STOCKED AREA AND LOGGING BY SPECIES

Oak covers
20.8%
of Hungary's forest
area.

Denomination	2017	2018	2019	2020	2021
Stocked area, thousand hectares					
• Oak	388	389	389	389	391
Moss-capped oak	212	212	213	216	216
Beech	112	113	113	113	114
Hornbeam	97	97	97	97	97
Acacia	455	454	455	457	459
Other hardwoods	118	119	121	123	125
Poplar	197	197	198	199	199
Other softwoods	98	97	97	97	96
Pine	191	188	185	182	179
Total	1,869	1,867	1,868	1,873	1,876
Logging, thousand m ³					
Oak	988	1,004	935	892	972
Moss-capped oak	863	840	751	721	801
Beech	728	726	670	674	683
Hornbeam	281	259	248	223	234
Acacia	1,488	1,586	1,502	1,303	1,421
Other hardwoods	316	324	329	319	341
Poplar	1,368	1,527	1,424	1,191	1,593
Other softwoods	337	334	310	229	280
Pine	1,207	1,166	1,145	1,029	1,198
Total	7,576	7,767	7,315	6,580	7,523

Source: National Land Centre, Forestry Department

TOTAL FOREST DAMAGE, 2021 (1/2)

Categories	Severity of damage ^{a)}					Total	Defense
	0–10% Very minor damage	11–25% Minor damage	26–60% Mode- rate damage	61–99% Major damage	100% Total damage		
	area, hectares						
Damage caused by emergency pests	0	0	0	0	21	21	0
Damage caused by insects	1,442	3,485	15,234	16,787	13,636	50,584	713
Damage caused by vertebrates	1,479	2,391	2,639	576	7,672	14,758	3,311
Damage caused by pathogens	58	146	366	272	321	1,162	274
Damage caused by plant pests	4	0	22	31	0	58	0
Tree death	608	21	346	362	3,197	4,533	1,677
Abiotic damage	1,000	1,104	8,276	3,016	18,831	32,226	5,520
Damage caused by human activity	156	0	0	0	359	516	38
Damage by unknown pests	191	69	8	20	111	398	18
Total	4,939	7,216	26,890	21,064	44,148	104,256	11,550

^{a)} Interpreted at the level of individual trees.

Source: National Land Centre, Forestry Department

The damaged forest area was
104 thousand hectares
 in 2021.

TOTAL FOREST DAMAGE, 2021 (2/2)

Damage caused by **insects** is the most common type of damage in Hungary's forests.

Categories	Severity of damage ^{a)}					Total	Defense
	0-10% Very minor damage	11-25% Minor damage	26-60% Moderate damage	61-99% Major damage	100% Total damage		
	Proportion of damaged trees (%)						
Damage caused by emergency pests	0	0	0	0	7	7	0
Damage caused by insects	73	54	62	80	86	74	1
Damage caused by vertebrates	39	47	32	50	28	34	22
Damage caused by pathogens	59	40	37	19	23	30	24
Damage caused by plant pests	5	0	50	62	0	53	0
Tree death	96	29	29	36	19	31	37
Abiotic damage	36	43	30	55	34	35	17
Damage caused by human activity	3	0	0	90	7	6	7
Damage by unknown pests	20	26	20	15	23	22	5
Total	54	49	48	74	48	53	11

^{a)} Interpreted at the level of individual trees.

Source: National Land Centre, Forestry Department

WILD GAME POPULATION, 2022⁺ (estimated)

Regions	Red deer	Fallow deer	Roe deer	Mouflon	Wild boar	Hare	Pheasant	Partridge
	heads							
Pest, Budapest	5,287	5,578	23,309	1,293	4,494	21,779	23,511	1,018
Central Hungary	5,287	5,578	23,309	1,293	4,494	21,779	23,511	1,018
Fejér	4,229	1,767	17,048	881	3,345	22,084	43,536	260
Komárom-Esztergom	5,410	2,606	7,713	1,981	3,020	3,078	6,422	156
Veszprém	14,842	2,184	12,631	2,550	5,520	11,749	16,275	48
Central Transdanubia	24,481	6,557	37,392	5,412	11,885	36,911	66,233	464
Győr-Moson-Sopron	7,008	1,029	22,131	70	3,500	20,752	16,955	1,804
Vas	8,153	1,002	11,869	95	4,432	5,675	14,758	115
Zala	10,143	384	10,255	145	6,521	4,182	9,785	5
Western Transdanubia	25,304	2,415	44,255	310	14,453	30,609	41,498	1,924
Baranya	11,455	1,320	10,180	131	4,909	5,981	12,931	12
Somogy	17,397	3,828	13,459	403	8,581	6,232	15,400	35
Tolna	6,500	5,289	18,936	0	4,235	19,002	26,171	59
Southern Transdanubia	35,352	10,437	42,575	534	17,725	31,215	54,502	106
Transdanubia	85,137	19,409	124,222	6,256	44,063	98,735	162,233	2,494
Borsod-Abaúj-Zemplén	9,108	237	24,526	1,029	1,528	14,506	26,534	368
Heves	7,209	284	14,617	2,613	1,055	17,462	21,275	49
Nógrád	5,699	1,444	5,418	1,179	1,476	3,164	6,541	134
Northern Hungary	22,016	1,965	44,561	4,821	4,059	35,132	54,350	551
Hajdú-Bihar	258	2,502	23,667	7	764	63,455	48,219	708
Jász-Nagykun-Szolnok	8	104	30,097	0	349	52,674	38,418	119
Szabolcs-Szatmár-Bereg	2,544	2,732	29,118	136	1,212	32,610	55,486	535
Northern Great Plain	2,810	5,338	82,882	143	2,325	148,739	142,123	1,362
Bács-Kiskun	6,432	3,431	33,666	21	2,808	45,732	58,673	991
Békés	390	4,873	40,403	30	484	91,512	84,669	1,016
Csongrád-Csanád	193	1,209	29,314	68	611	54,108	53,660	1,646
Southern Great Plain	7,015	9,513	103,383	119	3,903	191,352	197,002	3,653
Great Plain and North	31,841	16,816	230,826	5,083	10,287	375,223	393,475	5,566
Total	122,265	41,803	378,357	12,632	58,844	495,737	579,219	9,078

Source: National Game Management Database

In Hungary the roe deer population estimated for 2022 are

378.4
thousand
heads.

GAME MANAGEMENT^{a)} 2021

As for the big game the number of **wild boar** shot and as for the small game the number of **pheasants** shot was the highest in Hungary in 2021.

Regions	Red deer	Fallow deer	Roe deer	Mouflon	Wild boar ^{b)}	Hare	Pheasant	Partridge
	heads							
Pest, Budapest	3,463	2,980	7,296	595	14,548	4,733	28,800	815
Central Hungary	3,463	2,980	7,296	595	14,548	4,733	28,800	815
Fejér	1,838	624	3,862	155	6,958	1,904	42,857	1,331
Komárom-Esztergom	2,876	965	1,946	800	7,355	320	5,135	357
Veszprém	8,619	1,162	4,802	532	15,848	684	7,637	0
Central Transdanubia	13,333	2,751	10,610	1,487	30,161	2,908	55,629	1,688
Győr-Moson-Sopron	5,391	568	7,616	18	10,416	6,479	23,006	2,015
Vas	6,345	267	4,822	12	14,694	823	5,774	62
Zala	8,369	155	4,824	35	17,809	65	4,402	0
Western Transdanubia	20,105	990	17,262	65	42,919	7,367	33,182	2,077
Baranya	6,230	509	2,207	11	14,436	457	1,757	0
Somogy	9,927	1,481	3,426	26	21,757	454	6,272	240
Tolna	3,999	3,119	3,612	0	9,412	1,429	9,375	0
Southern Transdanubia	20,156	5,109	9,245	37	45,605	2,340	17,404	240
Transdanubia	53,594	8,850	37,117	1,589	118,685	12,615	106,215	4,005
Borsod-Abaúj-Zemplén	4,417	87	7,793	248	1,623	1,986	9,794	0
Heves	4,513	119	4,566	1,010	2,176	2,972	18,960	0
Nógrád	4,643	1,313	2,798	439	7,511	222	7,936	0
Northern Hungary	13,573	1,519	15,157	1,697	11,310	5,180	36,690	0
Hajdú-Bihar	192	1,420	6,783	0	1,893	15,519	28,202	0
Jász-Nagykun-Szolnok	1	65	8,781	0	917	8,967	38,379	236
Szabolcs-Szatmár-Bereg	1,283	1,370	8,748	60	2,589	7,119	35,286	0
Northern Great Plain	1,476	2,855	24,312	60	5,399	31,605	101,867	236
Bács-Kiskun	3,207	976	9,139	21	7,062	8,194	26,826	203
Békés	189	1,730	9,144	9	1,120	20,172	94,295	20
Csongrád-Csanád	63	290	8,444	23	1,364	13,985	38,920	1,166
Southern Great Plain	3,459	2,996	26,727	53	9,546	42,351	160,041	1,389
Great Plain and North	18,508	7,370	66,196	1,810	26,255	79,136	298,598	1,625
Total	75,565	19,200	110,609	3,994	159,488	96,484	433,613	6,445

^{a)} Number of wild animals shot.

^{b)} Data contain shots for diagnostic purposes.

Source: National Game Management Database

POND AQUACULTURE, INTENSIVE FISH FARMING, 2021

Counties Regions	Area of ponds in operation, hectares	Total harvest	Out of which: fish intended for human consumption	Fish intended for human consumption produced in intensive farms
				tonnes
Central Hungary	832	766	543	...
Central Transdanubia	2,618	2,027	1,072	93
Western Transdanubia	548	475	331	206
Southern Transdanubia	6,589	5,110	3,768	1,097
Northern Hungary	370	469	363	...
Northern Great Plain	9,199	6,911	3,940	1,715
Southern Great Plain	5,782	5,424	3,575	1,181
Total	25,937	21,184	13,592	4,364

Source: Institute of Agricultural Economics

13.6 thousand tonnes

of edible food fish was produced on

25.9 thousand hectares

of pond area in Hungary in 2021.

INTERNATIONAL TRADE



875.9bn HUF

In 2021, the foreign trade balance of the food, beverages and tobacco products



+13.6%

Exports of agricultural and food products increased



+13.7%

Imports of agricultural and food products increased



94.1%

The largest market for the food, beverages and tobacco products was the EU



-5.0%

The export value of wines from fresh grapes fell in euro



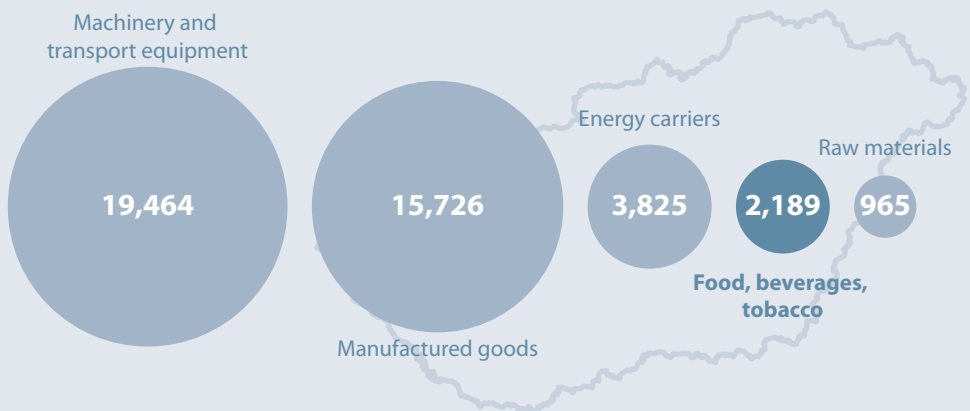
19.3%

The largest proportion of food, beverages and tobacco products imported by Hungary originated from Germany

EXPORT STRUCTURE BY PRODUCT GROUP, 2021 (billion HUF)



IMPORT STRUCTURE BY PRODUCT GROUP, 2021 (billion HUF)



INTERNATIONAL TRADE BY MAIN COMMODITY GROUPS

Food, beverages and tobacco products contributed

7.2%

to the export side of external trade.

Main commodity group	2017	2018	2019	2020	2021
	billion HUF				
	Exports				
Foods, beverages, tobacco	2,239.7	2,266.6	2,451.4	2,765.8	3,064.8
Raw materials	732.4	751.8	812.5	813.3	1,137.9
Energy carriers	776.1	943.0	928.1	809.1	1,376.3
Manufactured goods	9,999.9	10,830.3	10,899.8	11,483.5	13,634.3
Machinery, transport equipment	17,385.7	18,617.4	20,378.3	20,960.9	23,539.8
Total	31,133.9	33,409.1	35,470.1	36,832.6	42,753.1
	Imports				
Foods, beverages, tobacco	1,513.2	1,635.4	1,808.6	1,979.9	2,188.9
Raw materials	640.0	676.6	718.7	689.3	965.5
Energy carriers	2,222.4	2,589.9	2,734.0	1,933.2	3,825.1
Manufactured goods	10,376.7	11,656.3	12,285.9	13,472.8	15,725.7
Machinery, transport equipment	13,881.1	15,098.4	16,509.7	16,773.8	19,464.0
Total	28,633.4	31,656.7	34,056.8	34,849.0	42,169.3
	Balance of trade				
Foods, beverages, tobacco	726.4	631.1	642.8	785.9	875.9
Raw materials	92.5	75.2	93.8	124.0	172.4
Energy carriers	-1,446.3	-1,646.9	-1,805.9	-1,124.1	-2,448.8
Manufactured goods	-376.8	-826.0	-1,386.1	-1,989.3	-2,091.4
Machinery, transport equipment	3,504.6	3,519.0	3,868.6	4,187.1	4,075.8
Total	2,500.5	1,752.4	1,413.3	1,983.6	583.9

Source: Hungarian Central Statistical Office

INTERNATIONAL TRADE BY COMMODITY GROUPS

Commodity group	Exports		Imports	
	2020	2021	2020	2021
	at current prices, billion HUF			
Live animals	144.0	158.3	83.8	79.3
Meat, slaughter by-products, offal	313.4	379.3	186.5	182.6
Fish, and aquatic invertebrates	5.0	5.6	17.6	21.0
Dairy products, edible products of animal origin	170.1	185.3	161.5	168.6
Other animal products	25.8	41.4	19.2	25.9
Plant products	20.7	48.2	39.4	45.7
Edible vegetables	91.1	101.4	108.3	115.1
Edible fruit and nuts, citrus fruits	46.4	50.5	121.2	124.7
Coffee, tea, spices	20.0	25.1	48.6	56.8
Cereals	563.9	583.5	70.8	105.2
Products of the milling industry	51.8	64.0	23.2	25.5
Oil seeds and oleaginous fruits, straw and fodder	219.0	216.7	109.5	156.7
Vegetable saps and extracts	1.0	0.5	9.2	10.4
Other plant products	1.6	2.1	1.0	1.3
Animal or vegetable fats and oils	200.6	292.3	92.2	135.3
Preparations of meat, and fish	116.3	132.2	114.2	112.0
Sugars and sugar confectionery	73.3	83.3	62.2	71.1
Cocoa and cocoa preparations	68.5	78.9	103.4	112.7
Pastrycooks' products	96.4	111.1	160.1	177.3
Preparations of vegetables and fruit	200.9	207.6	99.9	111.2
Other edible preparations	259.5	287.4	193.6	210.4
Beverages, spirits and vinegar	267.1	310.1	124.7	138.4
Prepared animal fodder, residues	338.0	407.2	178.9	229.7
Tobacco and manufactured tobacco substitutes	77.6	59.0	109.7	128.3
Total	3,371.9	3,831.0	2,238.5	2,545.4

Source: Hungarian Central Statistical Office

Cereals accounted for

4.1%

of import among agricultural and food products.

EXPORTS BY COMMODITY GROUPS

The value of exports of agricultural and food products expressed in EUR increased by

11.1%.

Commodity group	2017	2018	2019	2020	2021
	million EUR				
Live animal	326.2	361.7	419.2	410.2	441.3
Meat, slaughter by-products, offal	966.4	998.4	1,038.4	892.8	1,058.2
Fish, and aquatic invertebrates	28.7	27.1	15.8	14.3	15.6
Dairy products, edible products of animal origin	455.7	455.0	477.5	485.1	516.0
Other animal products	65.4	93.7	120.5	73.6	115.4
Plant products	58.7	57.4	66.2	59.0	133.6
Edible vegetables	275.7	269.2	252.4	259.6	283.2
Edible fruit and nuts, citrus fruits	168.2	114.1	128.8	131.8	141.1
Coffee, tea, spices	55.0	53.0	63.6	56.9	70.1
Cereals	1,538.6	1,161.4	1,331.3	1,613.9	1,625.9
Products of the milling industry	105.0	112.1	131.7	147.5	178.2
Oil seeds and oleaginous fruits, straw and fodder	633.0	561.1	667.6	625.3	603.7
Vegetable saps and extracts	0.9	2.0	3.4	2.9	1.4
Other plant products	4.1	10.4	22.6	4.4	6.0
Animal or vegetable fats and oils	552.5	535.5	549.0	572.0	815.5
Preparations of meat, and fish	274.0	277.9	327.0	331.1	369.1
Sugars and sugar confectionery	254.6	211.1	199.8	208.9	232.2
Cocoa and cocoa preparations	158.1	163.6	184.9	194.7	220.0
Pastrycooks' products	222.0	249.9	264.3	274.7	309.9
Preparations of vegetables and fruit	514.2	557.4	529.5	571.6	578.5
Other edible preparations	581.3	610.3	648.3	739.4	802.2
Beverages, spirits and vinegar	644.2	693.5	744.2	760.5	865.2
Prepared animal fodder, residues	841.1	888.1	953.2	962.9	1,135.5
Tobacco and manufactured tobacco substitutes	153.9	218.9	209.4	221.2	164.8
Total	8,877.5	8,682.7	9,348.5	9,614.4	10,682.6

Source: Hungarian Central Statistical Office

IMPORTS BY COMMODITY GROUPS

Commodity group	2017	2018	2019	2020	2021
	million EUR				
Live animal	273.7	213.5	214.7	239.0	221.3
Meat, slaughter by-products, offal	530.9	545.2	615.4	533.4	509.0
Fish, and aquatic invertebrates	57.9	62.9	59.3	50.4	58.5
Dairy products, edible products of animal origin	435.0	440.3	459.0	460.0	469.9
Other animal products	51.0	67.2	91.6	54.8	72.3
Plant products	103.6	102.0	116.1	112.6	127.4
Edible vegetables	214.9	238.0	276.9	310.4	320.2
Edible fruit and nuts, citrus fruits	253.2	263.1	300.1	345.7	347.7
Coffee, tea, spices	152.8	147.8	142.3	138.3	158.4
Cereals	160.6	158.6	199.1	202.5	291.9
Products of the milling industry	60.8	62.4	72.3	66.1	71.1
Oil seeds and oleaginous fruits, straw and fodder	265.2	264.8	291.4	312.8	436.6
Vegetable saps and extracts	21.0	21.1	21.4	26.1	28.9
Other plant products	2.7	2.5	2.8	2.8	3.7
Animal or vegetable fats and oils	257.1	243.6	234.1	262.3	377.3
Preparations of meat, and fish	255.7	283.4	311.1	325.5	312.5
Sugars and sugar confectionery	190.3	158.3	168.7	176.9	198.2
Cocoa and cocoa preparations	259.9	280.6	293.5	294.1	314.3
Pastrycooks' products	363.8	404.7	455.2	456.1	494.2
Preparations of vegetables and fruit	224.3	253.1	284.3	284.4	310.1
Other edible preparations	471.1	506.1	538.7	551.6	587.4
Beverages, spirits and vinegar	292.7	336.4	370.9	354.9	386.5
Prepared animal fodder, residues	441.8	495.5	522.9	508.9	640.2
Tobacco and manufactured tobacco substitutes	243.4	264.7	261.4	312.6	357.5
Total	5,583.5	5,816.0	6,303.2	6,382.3	7,095.1

Source: Hungarian Central Statistical Office

Imports of agricultural and food products grew by

11.2%

in EUR terms.

EXPORTS OF MAIN AGRICULTURAL AND FOOD-INDUSTRIAL PRODUCTS

The value of water, mineral water, soft drinks export expressed in EUR grew by

16.2%.

Goods	2017	2018	2019	2020	2021
	million EUR				
Meat of bovine animals, fresh or chilled	33	39	35	26	30
Pork, fresh, chilled or frozen	355	281	349	339	339
Meat and edible offal of poultry, fresh chilled or frozen	468	577	545	414	578
Wheat and meslin	562	410	468	553	568
Maize	816	649	765	902	871
Wheat or meslin flour	48	50	59	52	57
Barley	140	84	77	131	158
Rape or colza seeds, whether or not broken	303	259	329	304	269
Sunflower seeds, whether or not broken	188	205	228	196	208
Sunflower-, safflower- or cotton-seed oil and fractions there of, not chemically modified	445	436	439	423	595
Sausages and similar products of meat, offal or blood, prepared food based on these products	91	94	103	114	112
Beet-sugar, cane-sugar, sucrose	49	30	16	21	14
Vegetables preserved otherwise than by vinegar, not frozen	266	293	283	311	315
Vegetables frozen	87	84	68	70	74
Fruit juices (including grape must) and vegetable juices, not containing added spirit, with or without added sugar	98	102	82	80	98
Water, mineral water, soft drinks	171	199	197	207	240
Wine of fresh grapes	104	124	108	120	114
Spirits, liqueurs, compound alcoholic beverages	11	11	10	11	12
Bran, sharps and other residues; whether or not in the form of pellets	10	10	13	10	13
Prepared animal feed	605	651	677	699	789

Source: Hungarian Central Statistical Office

IMPORTS OF MAIN AGRICULTURAL AND FOOD-INDUSTRIAL PRODUCTS

Goods	2017	2018	2019	2020	2021
	million EUR				
Meat of bovine animals, frozen	29	31	42	34	33
Pork fresh, chilled or frozen	317	311	358	292	261
Milk and cream, not concentrated nor containing added sugar or other sweetening matter	59	60	59	55	53
Potatoes, fresh or chilled	19	23	26	30	36
Bananas, including plantains, fresh or dried	63	68	53	60	55
Citrus fruit, fresh or dried	52	55	69	86	72
Apples, pears and quinces, fresh	14	9	15	27	26
Coffee, whether or not roasted or decaffeinated; coffee husks and skins; coffee substitutes containing coffee in any proportion	117	114	103	98	116
Barley	5	3	5	9	11
Rice	25	26	34	36	34
Sunflower seeds, whether or not broken	96	90	105	99	167
Sunflower-, safflower- or cotton-seed oil and fractions thereof, not chemically modified	14	11	12	36	32
Animal or vegetable fats and oils and their fractions, partly or wholly hydrogenated, whether, or not refined, but not further prepared	21	18	14	15	21
Margarine, edible vegetable oil	66	66	68	66	81
Fruit juices (including grape must) and vegetable juices; not containing added spirit, with or without added sugar	58	62	71	62	70
Beer made from malt	41	58	68	68	74
Meat and fish products not intended for human consumption	35	33	33	33	55
Oilcake and pellet from soybean oil	150	143	144	127	192
Oilcake and pellet from sunflower oil	3	2	3	1	4
Prepared animal feed	230	288	310	320	354
Raw, unmanufactured tobacco, and tobacco refuse	89	110	83	75	63

Source: Hungarian Central Statistical Office

The value of margarine, edible vegetable oil imports expressed in EUR increased by

22.4%.

EXPORT TO MAIN PARTNER COUNTRIES^{a)}

The largest market for food, beverages and tobacco products was the EU, primarily

Romania
in 2021.

Denomination	2017	2018	2019	2020	2021
	million EUR				
Exports total	7,244.0	7,110.0	7,538.2	7,886.1	8,546.6
Europe	6,747.1	6,690.5	7,159.6	7,452.3	8,046.1
EU27 (from 2020)	6,511.5	6,431.3	6,889.4	6,371.9	6,933.2
EU14	3,326.9	3,275.0	3,449.6	3,467.8	3,784.3
Out of which: Austria	626.3	612.4	624.1	604.1	703.6
Belgium	117.7	124.8	109.9	105.5	127.5
France	268.7	283.1	286.5	248.8	284.1
Netherlands	236.6	215.5	255.3	179.4	189.2
Germany	879.1	929.6	932.2	1,009.8	1042.1
Italy	875.4	789.8	879.5	942.4	1042.2
Spain	94.1	90.2	93.2	105.3	117.6
Sweden	59.6	60.5	67.0	76.5	69.4
New EU members	2,477.2	2,494.7	2,713.1	2,904.1	3,148.8
Out of which: Bulgaria	101.8	106.0	129.0	134.7	161.3
Czechia	299.3	323.6	328.9	305.4	344.3
Poland	333.8	307.0	358.7	349.6	406.0
Lithuania	31.2	46.1	41.9	38.1	33.6
Slovakia	385.6	409.3	405.0	401.2	454.9
Slovenia	127.8	127.5	137.0	129.4	138.9
Romania	915.8	879.2	978.2	1,214.4	1239.6
Non-EU European countries	943.0	920.9	996.6	1,080.4	1,112.9
Out of which: Bosnia-Herzegovina	66.2	66.2	80.6	78.5	86.9
United Kingdom	202.2	171.2	162.4	157.2	149.9
Russia	106.0	110.0	131.6	142.2	119.7
Ukraine	79.8	70.8	70.8	77.2	82.3
Switzerland	235.6	259.2	269.9	320.5	315.2
Asia	402.1	311.1	250.8	292.2	305.0
Out of which: Japan	100.9	53.3	31.7	28.9	35.0
Republic of Korea	8.7	4.5	1.7	1.9	1.8
Africa	15.1	21.5	22.1	31.1	38.7
America	62.0	72.6	88.5	91.2	129.6
Out of which: USA	25.8	29.2	42.6	34.6	67.8
Australia and Oceania	17.6	14.2	17.3	19.3	27.4

^{a)} Food, beverages, tobacco.

Source: Hungarian Central Statistical Office

IMPORT FROM MAIN^{a)} PARTNER COUNTRIES^{b)}

Denomination	2017	2018	2019	2020	2021
	million EUR				
Import total	4,892.7	5,129.4	5,557.8	5,644.3	6,101.3
Europe	4,728.4	4,937.4	5,361.9	5,440.1	5,910.8
EU27 (from 2020)	4,460.0	4,667.9	5,036.9	5,157.0	5 655.6
EU14	4,441.2	4,646.8	5,015.8	2,946.5	3,238.4
Out of which: Austria	381.9	400.2	437.9	448.4	474.8
Belgium	128.9	134.5	144.2	136.4	175.4
Denmark	42.0	30.9	33.1	27.7	30.7
France	192.9	221.4	209.1	212.2	225.6
Greece	27.4	23.4	27.3	32.6	37.7
Netherlands	334.5	313.0	351.6	353.2	426.2
Germany	1,014.6	1,073.5	1,132.0	1,140.1	1,180.6
Italy	263.4	284.4	310.0	309.5	359.0
Spain	184.0	179.2	214.4	225.5	253.2
Sweden	19.4	20.5	17.5	17.0	23.2
New EU members	1,845.3	1,955.9	2,156.2	2,210.6	2,417.2
Out of which: Czechia	278.4	296.1	315.7	310.6	332.7
Poland	648.2	713.6	802.6	828.0	895.1
Slovakia	489.4	494.8	531.3	548.9	567.5
Romania	184.0	191.4	226.3	227.1	285.1
Non-EU European countries	268.4	269.5	291.0	283.1	255.2
Out of which: Turkey	18.9	21.1	21.1	26.9	28.4
United Kingdom	104.0	112.5	96.5	91.2	37.8
Asia	82.7	106.0	104.6	111.1	111.5
Out of which: India	9.2	11.5	9.7	9.7	9.1
Malaysia	11.8	12.8	20.4	24.1	16.6
Vietnam	12.1	16.1	11.8	10.1	15.9
Africa	12.4	11.6	20.1	15.5	16.6
Out of which: Uganda	0.7	0.7	0.3	0.3	0.4
Malawi	0.4	0.6	1.1	0.6	0.2
America	68.5	73.8	70.5	77.1	62.1
Out of which: USA	38.5	46.7	45.2	52.3	40.3
Argentina	0.8	0.6	0.8	1.1	1.3
Brazil	18.1	16.0	13.5	12.2	7.2
Peru	0.1	0.1	0.2	0.1	0.1
Australia and Oceania	0.6	0.6	0.5	0.5	0.4

^{a)} According to the Country of Dispatch.

^{b)} Food, beverages, tobacco.

Source: Hungarian Central Statistical Office

In 2021, the highest value of food products was imported from the **United Kingdom** among non-EU European countries.

COUNTY DATA



6.8 tonnes/hectare

Average wheat yield
in Hajdú-Bihar county in 2021



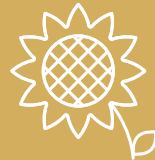
12.7%

Of the Hungarian cattle
population was in Hajdú-Bihar
county.



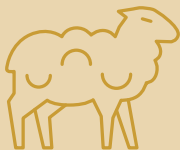
79.2 tonnes/hectare

Average sugar beet yield
in Békés county



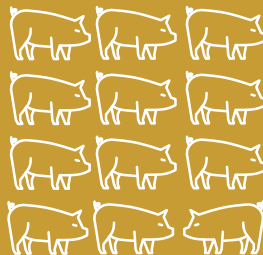
654.7k hectares

Harvested area of sunflower
in Hungary



887k heads

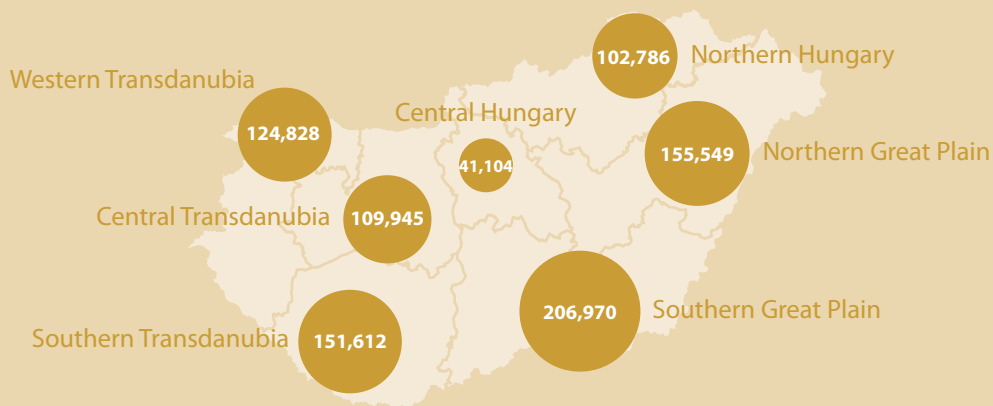
Sheep population
in Hungary



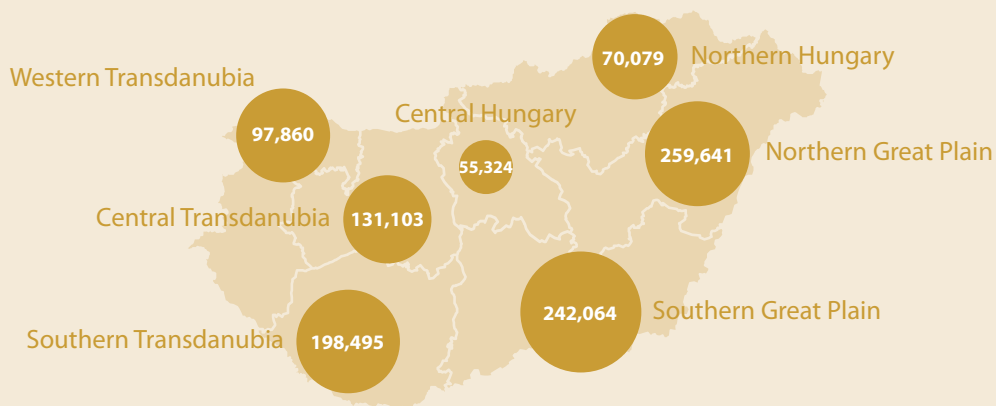
197 heads

Pig population per 100 hectares
of agricultural area
in Komárom-Esztergom county

THE HARVESTED AREA OF WHEAT BY REGION, 2021 (hectares)



THE HARVESTED AREA OF MAIZE BY REGION, 2021 (hectares)



LAND AREA BY REGIONS^{a)}

1ST JUNE 2021

37.8%

of the orchards were located in Szabolcs-Szatmár-Bereg county in 2021.

Regions	Arable land	Kitchen garden	Orchard	Vineyard	Grassland
	thousand hectares				
Budapest	4.4	0.0	0.1	0.0	0.5
Pest	247.1	0.2	7.4	1.5	52.2
Central Hungary	251.5	0.2	7.5	1.5	52.8
Fejér	251.4	0.2	3.1	2.3	22.5
Komárom-Esztergom	101.5	0.1	0.6	1.0	8.4
Veszprém	156.0	0.1	1.1	2.9	44.2
Central Transdanubia	508.9	0.3	4.8	6.1	75.2
Győr-Moson-Sopron	198.7	0.1	2.2	1.6	20.0
Vas	151.7	0.1	1.2	0.4	9.9
Zala	99.2	0.2	1.8	0.4	23.9
Western Transdanubia	449.7	0.4	5.2	2.4	53.8
Baranya	197.5	0.1	1.1	3.0	21.2
Somogy	204.7	0.2	2.9	3.8	21.5
Tolna	208.6	0.1	1.9	4.3	13.3
Southern Transdanubia	610.8	0.5	5.9	11.1	56.0
Transdanubia	1,569.4	1.2	16.0	19.6	185.0
Borsod-Abaúj-Zemplén	227.9	0.3	6.9	5.5	60.7
Heves	140.9	0.1	4.6	11.6	31.9
Nógrád	53.2	0.1	1.4	0.2	29.2
Northern Hungary	422.0	0.5	12.9	17.2	121.8
Hajdú-Bihar	334.1	0.2	1.3	0.0	122.1
Jász-Nagykun-Szolnok	377.0	0.1	1.3	0.7	49.8
Szabolcs-Szatmár-Bereg	238.6	0.7	31.7	0.0	36.6
Northern Great Plain	949.7	1.0	34.4	0.7	208.5
Bács-Kiskun	324.7	0.2	9.4	22.1	98.1
Békés	389.8	0.2	1.1	0.0	48.6
Csongrád-Csanád	238.2	0.1	2.5	1.0	39.6
Southern Great Plain	952.7	0.5	13.1	23.1	186.3
Great Plain and North	2,324.4	2.0	60.4	41.0	516.7
Total	4,145.3	3.4	83.8	62.1	754.5

^{a)} Due to methodological change in data collection, only the data on agricultural area (arable land, kitchen garden, orchard, vineyard, grasslands) have been available since 2020.

Source: Hungarian Central Statistical Office

PRODUCTION OF WHEAT BY REGIONS 2021^{a)}

Regions	Harvested area	Total production	Average yield
	hectares	tonnes	kg per hectare
Budapest	91	448	4,920
Pest	41,013	228,644	5,570
Central Hungary	41,104	229,092	5,570
Fejér	61,800	357,393	5,780
Komárom-Esztergom	19,309	120,523	6,240
Veszprém	28,836	151,611	5,260
Central Transdanubia	109,945	629,527	5,730
Győr-Moson-Sopron	57,447	320,532	5,580
Vas	42,519	253,067	5,950
Zala	24,862	157,134	6,320
Western Transdanubia	124,828	730,733	5,850
Baranya	51,273	314,576	6,140
Somogy	53,267	328,019	6,160
Tolna	47,072	281,696	5,980
Southern Transdanubia	151,612	924,291	6,100
Transdanubia	386,385	2,284,551	5,910
Borsod-Abaúj-Zemplén	53,165	302,691	5,690
Heves	35,580	201,780	5,670
Nógrád	14,041	70,933	5,050
Northern Hungary	102,786	575,404	5,600
Hajdú-Bihar	48,334	327,959	6,790
Jász-Nagykun-Szolnok	88,420	494,006	5,590
Szabolcs-Szatmár-Bereg	18,795	111,124	5,910
Northern Great Plain	155,549	933,089	6,000
Bács-Kiskun	63,144	365,087	5,780
Békés	89,378	579,063	6,480
Csongrád-Csanád	54,448	323,855	5,950
Southern Great Plain	206,970	1,268,005	6,130
Great Plain and North	465,305	2,776,498	5,970
Total	892,794	5,290,141	5,930

10.9%

of the wheat was grown in Békés county.

^{a)} The table contains rounded figures and therefore the sum of individual data may differ from the grand total. Due to a methodological change from 2020 onwards the spatial data are published not by the county of the headquarters but by the county where the land used is located. With durum wheat and spelt.

Source: Hungarian Central Statistical Office

PRODUCTION OF BARLEY BY REGIONS 2021^{a)}

12.3%

of the barley was harvested in Bács-Kiskun county.

Regions	Harvested area	Total production	Average yield
	hectares	tonnes	kg per hectare
Budapest	108	534	4,940
Pest	12,461	70,889	5,690
Central Hungary	12,569	71,423	5,680
Fejér	16,548	117,314	7,090
Komárom-Esztergom	6,530	41,213	6,310
Veszprém	8,953	49,578	5,540
Central Transdanubia	32,031	208,105	6,500
Győr-Moson-Sopron	21,663	131,837	6,090
Vas	16,679	96,952	5,810
Zala	6,944	42,579	6,130
Western Transdanubia	45,286	271,368	5,990
Baranya	15,499	108,332	6,990
Somogy	14,099	93,677	6,640
Tolna	15,011	106,278	7,080
Southern Transdanubia	44,609	308,287	6,910
Transdanubia	121,926	787,760	6,460
Borsod-Abaúj-Zemplén	9,322	56,637	6,080
Heves	9,242	56,701	6,140
Nógrád	1,834	8,943	4,880
Northern Hungary	20,398	122,281	5,990
Hajdú-Bihar	10,685	76,819	7,190
Jász-Nagykun-Szolnok	27,423	162,400	5,920
Szabolcs-Szatmár-Bereg	1,699	9,072	5,340
Northern Great Plain	39,807	248,291	6,240
Bács-Kiskun	31,935	210,721	6,600
Békés	24,484	156,454	6,390
Csongrád-Csanád	17,487	114,696	6,560
Southern Great Plain	73,906	481,871	6,520
Great Plain and North	134,111	852,443	6,360
Total	268,606	1,711,626	6,370

^{a)} The table contains rounded figures and therefore the sum of individual data may differ from the grand total. Due to a methodological change from 2020 onwards the spatial data are published not by the county of the headquarters but by the county where the land used is located.

Source: Hungarian Central Statistical Office

PRODUCTION OF MAIZE BY REGIONS 2021^{a)}

Regions	Harvested area	Total production	Average yield
	hectares	tonnes	kg per hectare
Budapest	290	1,885	6,500
Pest	55,034	334,889	6,090
Central Hungary	55,324	336,774	6,090
Fejér	79,331	466,759	5,880
Komárom-Esztergom	31,110	244,356	7,850
Veszprém	20,662	110,708	5,360
Central Transdanubia	131,103	821,823	6,270
Győr-Moson-Sopron	41,683	315,093	7,560
Vas	25,373	208,751	8,230
Zala	30,804	225,585	7,320
Western Transdanubia	97,860	749,429	7,660
Baranya	60,586	404,161	6,670
Somogy	67,690	416,925	6,160
Tolna	70,219	345,912	4,930
Southern Transdanubia	198,495	1,166,998	5,880
Transdanubia	427,458	2,738,250	6,410
Borsod-Abaúj-Zemplén	51,584	371,669	7,210
Heves	11,837	74,333	6,280
Nógrád	6,658	38,479	5,780
Northern Hungary	70,079	484,481	6,910
Hajdú-Bihar	102,850	697,585	6,780
Jász-Nagykun-Szolnok	50,617	261,262	5,160
Szabolcs-Szatmár-Bereg	106,174	731,809	6,890
Northern Great Plain	259,641	1,690,656	6,510
Bács-Kiskun	77,594	402,899	5,190
Békés	111,447	580,142	5,210
Csongrád-Csanád	53,023	229,003	4,320
Southern Great Plain	242,064	1,212,044	5,010
Great Plain and North	571,784	3,387,181	5,920
Total	1,054,566	6,462,205	6,130

Average maize yield was the highest,

**8,230 kg
per hectare**

in Vas county.

^{a)} The table contains rounded figures and therefore the sum of individual data may differ from the grand total. Due to a methodological change from 2020 onwards the spatial data are published not by the county of the headquarters but by the county where the land used is located. Including hybrid maize.

Source: Hungarian Central Statistical Office

PRODUCTION OF SUGAR BEET BY REGIONS 2021^{a)}

17.4%

of the sugar beet was grown in Fejér county.

Regions	Harvested area	Total production	Average yield
	hectares	tonnes	kg per hectare
Budapest	–	–	–
Pest	375	20,108	53,620
Central Hungary	375	20,108	53,620
Fejér	2,131	118,243	55,490
Komárom-Esztergom	328	19,513	59,490
Veszprém	245	11,206	45,740
Central Transdanubia	2,704	148,962	55,090
Győr-Moson-Sopron	1,108	71,953	64,940
Vas	793	48,291	60,900
Zala	523	30,897	59,080
Western Transdanubia	2,424	151,141	62,350
Baranya	503	30,219	60,080
Somogy	2,080	115,665	55,610
Tolna	1,344	62,004	46,130
Southern Transdanubia	3,927	207,888	52,940
Transdanubia	9,055	507,991	56,100
Borsod-Abaúj-Zemplén	9	391	43,440
Heves	7	93	13,290
Nógrád	–	–	–
Northern Hungary	16	484	30,250
Hajdú-Bihar	389	28,614	73,560
Jász-Nagykun-Szolnok	169	11,562	68,410
Szabolcs-Szatmár-Bereg	97	3,194	32,930
Northern Great Plain	655	43,370	66,210
Bács-Kiskun	1,420	77,448	54,540
Békés	81	6,416	79,210
Csongrád-Csanád	416	22,190	53,340
Southern Great Plain	1,917	106,054	55,320
Great Plain and North	2,588	149,908	57,920
Total	12,018	678,007	56,420

^{a)} The table contains rounded figures and therefore the sum of individual data may differ from the grand total. Due to a methodological change from 2020 onwards the spatial data are published not by the county of the headquarters but by the county where the land used is located.

Source: Hungarian Central Statistical Office

PRODUCTION OF SUNFLOWER SEED BY REGIONS 2021^{a)}

Regions	Harvested area	Total production	Average yield
	hectares	tonnes	kg per hectare
Budapest	27	85	3,150
Pest	34,610	84,187	2,430
Central Hungary	34,637	84,272	2,430
Fejér	38,042	109,183	2,870
Komárom-Esztergom	12,673	39,601	3,120
Veszprém	9,350	23,365	2,500
Central Transdanubia	60,065	172,149	2,870
Győr-Moson-Sopron	16,316	46,362	2,840
Vas	7,335	23,339	3,180
Zala	8,292	23,066	2,780
Western Transdanubia	31,943	92,767	2,900
Baranya	20,158	57,015	2,830
Somogy	32,162	88,340	2,750
Tolna	32,507	93,023	2,860
Southern Transdanubia	84,827	238,378	2,810
Transdanubia	176,835	503,294	2,850
Borsod-Abaúj-Zemplén	45,481	122,510	2,690
Heves	34,555	93,085	2,690
Nógrád	9,801	23,292	2,380
Northern Hungary	89,837	238,887	2,660
Hajdú-Bihar	58,694	178,320	3,040
Jász-Nagykun-Szolnok	94,997	235,966	2,480
Szabolcs-Szatmár-Bereg	47,044	123,501	2,630
Northern Great Plain	200,735	537,787	2,680
Bács-Kiskun	37,982	98,737	2,600
Békés	83,993	222,648	2,650
Csongrád-Csanád	30,674	72,088	2,350
Southern Great Plain	152,649	393,473	2,580
Great Plain and North	443,221	1,170,147	2,640
Total	654,693	1,757,713	2,680

13.4%

of the sunflower seeds were harvested in Jász-Nagykun-Szolnok county.

^{a)} The table contains rounded figures and therefore the sum of individual data may differ from the grand total. Due to a methodological change from 2020 onwards the spatial data are published not by the county of the headquarters but by the county where the land used is located.

Source: Hungarian Central Statistical Office

PRODUCTION OF SOYBEANS BY REGIONS 2021^{a)}

30.2%
of the soybeans were
grown in
Baranya county.

Regions	Harvested area	Total production	Average yield
	hectares	tonnes	kg per hectare
Budapest	–	–	–
Pest	179	369	2,060
Central Hungary	179	369	2,060
Fejér	844	2,024	2,400
Komárom-Esztergom	170	451	2,650
Veszprém	1,478	3,114	2,110
Central Transdanubia	2,492	5,589	2,240
Győr-Moson-Sopron	4,797	11,909	2,480
Vas	9,128	20,786	2,280
Zala	6,828	15,915	2,330
Western Transdanubia	20,753	48,610	2,340
Baranya	16,239	47,215	2,910
Somogy	3,197	7,818	2,450
Tolna	2,212	4,489	2,030
Southern Transdanubia	21,648	59,522	2,750
Transdanubia	44,893	113,721	2,530
Borsod-Abaúj-Zemplén	4,124	10,478	2,540
Heves	76	137	1,800
Nógrád	182	331	1,820
Northern Hungary	4,382	10,946	2,500
Hajdú-Bihar	429	1,173	2,730
Jász-Nagykun-Szolnok	870	2,129	2,450
Szabolcs-Szatmár-Bereg	683	1,812	2,650
Northern Great Plain	1,982	5,114	2,580
Bács-Kiskun	6,236	16,778	2,690
Békés	3,408	7,314	2,150
Csongrád-Csanád	1,039	2,338	2,250
Southern Great Plain	10,683	26,430	2,470
Great Plain and North	17,047	42,490	2,490
Total	62,119	156,580	2,520

^{a)} The table contains rounded figures and therefore the sum of individual data may differ from the grand total. Due to a methodological change from 2020 onwards the spatial data are published not by the county of the headquarters but by the county where the land used is located.

Source: Hungarian Central Statistical Office

PRODUCTION OF RAPESEED BY REGIONS 2021^{a)}

Regions	Harvested area	Total production	Average yield
	hectares	tonnes	kg per hectare
Budapest	207	327	1,580
Pest	11,719	33,636	2,870
Central Hungary	11,926	33,963	2,850
Fejér	19,303	60,547	3,140
Komárom-Esztergom	3,827	8,066	2,110
Veszprém	9,921	25,078	2,530
Central Transdanubia	33,051	93,691	2,830
Győr-Moson-Sopron	20,365	61,609	3,030
Vas	26,761	79,149	2,960
Zala	13,022	36,984	2,840
Western Transdanubia	60,148	177,742	2,960
Baranya	11,542	32,354	2,800
Somogy	17,559	50,452	2,870
Tolna	12,947	36,982	2,860
Southern Transdanubia	42,048	119,788	2,850
Transdanubia	135,247	391,221	2,890
Borsod-Abaúj-Zemplén	16,997	49,702	2,920
Heves	11,437	34,803	3,040
Nógrád	5,091	15,889	3,120
Northern Hungary	33,525	100,394	2,990
Hajdú-Bihar	5,181	16,361	3,160
Jász-Nagykun-Szolnok	15,748	37,977	2,410
Szabolcs-Szatmár-Bereg	4,246	13,532	3,190
Northern Great Plain	25,175	67,870	2,700
Bács-Kiskun	22,136	59,184	2,670
Békés	15,316	44,768	2,920
Csongrád-Csanád	14,210	36,624	2,580
Southern Great Plain	51,662	140,576	2,720
Great Plain and North	110,362	308,840	2,800
Total	257,535	734,024	2,850

10.8%

of the rapeseed
was harvested in
Vas county.

^{a)} The table contains rounded figures and therefore the sum of individual data may differ from the grand total. Due to a methodological change from 2020 onwards the spatial data are published not by the county of the headquarters but by the county where the land used is located.

Source: Hungarian Central Statistical Office

PRODUCTION OF FRUIT AND GRAPES BY REGIONS^{a)}

Total harvested fruit production increased by

21.6%

compared to the previous year.

Regions	Fruits		Grapes	
	production, tonnes			
	2020	2021	2020	2021
Budapest	112	75	33	23
Pest	31,324	35,746	6,723	7,055
Central Hungary	31,436	35,821	6,756	7,078
Fejér	12,655	13,024	18,551	20,388
Komárom-Esztergom	1,495	2,611	5,282	5,688
Veszprém	4,421	4,638	23,926	21,791
Central Transdanubia	18,571	20,273	47,759	47,867
Győr-Moson-Sopron	12,590	12,370	9,042	9,444
Vas	19,008	17,599	3,864	3,781
Zala	19,704	19,626	5,414	6,042
Western Transdanubia	51,302	49,595	18,320	19,267
Baranya	5,276	4,547	21,818	20,347
Somogy	7,438	7,126	28,180	28,234
Tolna	5,071	4,660	30,777	35,335
Southern Transdanubia	17,785	16,333	80,775	83,916
Transdanubia	87,658	86,201	146,854	151,050
Borsod-Abaúj-Zemplén	41,637	35,165	27,902	28,981
Heves	25,211	24,088	78,226	73,086
Nógrád	3,763	4,672	1,131	999
Northern Hungary	70,611	63,925	107,259	103,066
Hajdú-Bihar	22,345	23,548	564	571
Jász-Nagykun-Szolnok	4,646	4,849	4,468	4,301
Szabolcs-Szatmár-Bereg	300,111	426,116	558	575
Northern Great Plain	327,102	454,513	5,590	5,447
Bács-Kiskun	43,306	42,232	166,138	168,206
Békés	4,988	4,344	123	121
Csongrád-Csanád	10,122	12,241	2,333	2,782
Southern Great Plain	58,416	58,817	168,594	171,109
Great Plain and North	456,129	577,255	281,443	279,622
Total	575,223	699,277	435,053	437,750

^{a)} The table contains rounded figures and therefore the sum of individual data may differ from the grand total. Due to a methodological change from 2020 onwards the spatial data are published not by the county of the headquarters but by the county where the land used is located.

Source: Hungarian Central Statistical Office

CATTLE AND PIG STOCK BY REGIONS^{a)} 1ST DECEMBER 2021

Regions	Cattle	Out of which: cows	Pigs	Out of which: breeding sows
	thousand heads			
Budapest	1	1	0	–
Pest	85	27	46	3
Central Hungary	86	28	46	3
Fejér	44	22	94	4
Komárom-Esztergom	17	7	220	9
Veszprém	48	23	46	2
Central Transdanubia	109	53	359	14
Győr-Moson-Sopron	61	25	122	7
Vas	28	13	38	2
Zala	27	11	77	5
Western Transdanubia	117	50	237	14
Baranya	34	16	314	21
Somogy	32	16	209	11
Tolna	26	10	153	8
Southern Transdanubia	91	42	676	39
Transdanubia	317	144	1,272	68
Borsod-Abaúj-Zemplén	47	24	60	5
Heves	19	9	26	1
Nógrád	23	13	18	1
Northern Hungary	88	47	104	7
Hajdú-Bihar	115	60	325	19
Jász-Nagykun-Szolnok	63	30	261	16
Szabolcs-Szatmár-Bereg	54	28	116	6
Northern Great Plain	232	117	702	41
Bács-Kiskun	73	38	222	16
Békés	66	28	238	16
Csongrád-Csanád	39	19	143	6
Southern Great Plain	178	84	602	38
Great Plain and North	499	248	1,408	86
Total	902	420	2,726	157

12.7%

of the cattle population was in Hajdú-Bihar county.

^{a)} The table contains rounded figures and therefore the sum of individual data may differ from the grand total. From 2020, data by place of rearing. Due to a methodological changes from 2020 onwards only data of data providers reaching the threshold (in terms of economic size) are gathered.

Source: Hungarian Central Statistical Office

SHEEP AND HEN STOCK BY REGIONS^{a)} 1ST DECEMBER 2021

22.3%

of the Hungarian sheep population was in Hajdú-Bihar county.

Regions	Sheep	Out of which: ewes	Hen	Out of which: laying hens
	thousand heads			
Budapest	1	1	16	15
Pest	68	57	1,131	676
Central Hungary	69	58	1,147	691
Fejér	24	20	707	307
Komárom-Esztergom	11	9	1,508	910
Veszprém	44	37	1,394	564
Central Transdanubia	79	66	3,610	1,780
Győr-Moson-Sopron	10	8	1,076	439
Vas	1	1	2,399	887
Zala	14	10	1,116	262
Western Transdanubia	24	18	4,590	1,589
Baranya	14	11	1,677	203
Somogy	9	7	135	73
Tolna	39	32	78	43
Southern Transdanubia	62	51	1,890	319
Transdanubia	166	135	10,090	3,688
Borsod-Abaúj-Zemplén	63	50	1,506	472
Heves	18	14	314	148
Nógrád	15	12	133	57
Northern Hungary	95	76	1,953	677
Hajdú-Bihar	198	162	2,272	549
Jász-Nagykun-Szolnok	39	31	812	264
Szabolcs-Szatmár-Bereg	119	101	6,970	791
Northern Great Plain	356	293	10,054	1,604
Bács-Kiskun	123	101	5,243	1,679
Békés	35	26	2,775	636
Csongrád-Csanád	43	31	853	114
Southern Great Plain	201	159	8,871	2,430
Great Plain and North	652	528	20,878	4,710
Total	887	720	32,114	9,089

^{a)} The table contains rounded figures and therefore the sum of individual data may differ from the grand total. From 2020, data by place of rearing. Due to a methodological changes from 2020 onwards only data of data providers reaching the threshold (in terms of economic size) are gathered.

Source: Hungarian Central Statistical Office

LIVESTOCK DENSITY^{a)} 1ST DECEMBER

Regions	Livestock per 100 hectares of agricultural land area, heads			
	cattle		pigs	
	2020	2021	2020	2021
Budapest	98	22	68	2
Pest	30	28	18	15
Central Hungary	31	27	19	15
Fejér	18	16	32	33
Komárom-Esztergom	17	15	141	197
Veszprém	31	24	26	22
Central Transdanubia	22	18	50	60
Győr-Moson-Sopron	23	27	49	55
Vas	21	17	25	23
Zala	23	22	58	61
Western Transdanubia	22	23	44	46
Baranya	17	15	108	141
Somogy	16	14	80	90
Tolna	14	11	90	67
Southern Transdanubia	16	13	92	99
Transdanubia	19	18	65	71
Borsod-Abaúj-Zemplén	17	15	21	20
Heves	11	10	14	14
Nógrád	24	27	20	21
Northern Hungary	16	15	19	18
Hajdú-Bihar	26	25	95	71
Jász-Nagykun-Szolnok	14	15	71	61
Szabolcs-Szatmár-Bereg	18	18	35	38
Northern Great Plain	20	19	70	59
Bács-Kiskun	17	16	56	49
Békés	15	15	75	54
Csongrád-Csanád	15	14	61	51
Southern Great Plain	16	15	64	51
Great Plain and North	17	17	58	48
Total	19	18	58	54

The pig population density was the highest in **Komárom-Esztergom** county.

^{a)} The table contains rounded figures and therefore the sum of individual data may differ from the grand total. Due to a methodological change from 2020 onwards only the data of data providers reaching the threshold (in terms of economic size) are gathered and they are published not by the county of the headquarters but by the county where the land used is located.

Source: Hungarian Central Statistical Office

INTERNATIONAL DATA



6,983k persons

aged 15-64 employed in the agriculture,
game management and fishery sector in the EU27
in 2021



4.2%

Hungary's share of the apple
production in the EU27



8.7%

Hungary's share of the maize
production in the EU27



17.0%

Hungary's share of the sunflower
seed production in the EU27



2.0%

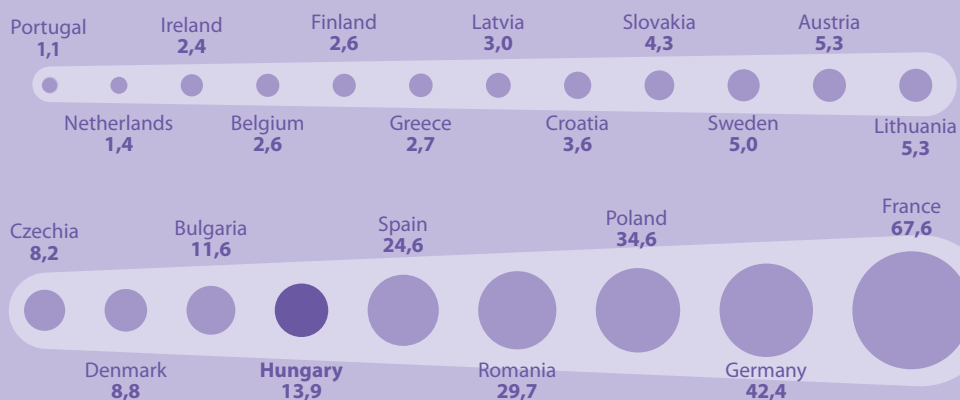
Hungary's share of EU27
pigmeat production



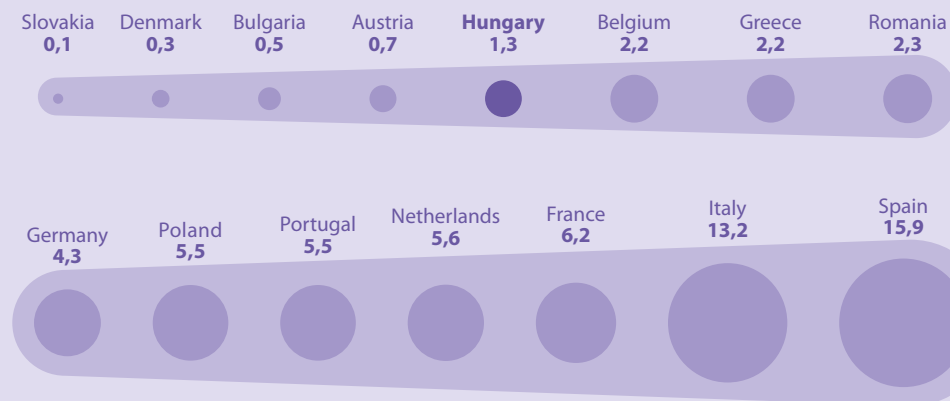
+20.0%

As regards the increase in
producer prices compared to
2020 Hungary ranks No. 2 among the
EU Member States

CEREAL PRODUCTION IN THE EU PRIORITY MEMBER STATES, 2021 (million tonnes)



VEGETABLE PRODUCTION IN THE EU PRIORITY MEMBER STATES, 2021 (million tonnes)



PRODUCTION OF CEREALS

Total cereal production
decreased by

11.2%

in Hungary.

Country	2018	2019	2020	2021
	thousand tonnes			
World total	2,906,511	2,963,813	2,996,142	..
EU27 total (from 2020)	274,039	299,364	285,282	..
Austria	4,802	5,417	5,668	5,300
Belgium	2,483	2,904	2,655	2,591
Bulgaria	10,111	11,132	8,599	11,640
Czechia	6,971	7,646	8,127	8,227
Denmark	7,005	9,630	9,579	8,760
Finland	2,730	3,982	3,371	2,612
France	62,568	71,208	57,520	67,617
Greece	2,997	2,947	3,109	2,655
Netherlands	1,335	1,587	1,415	1,411
Croatia	3,231	3,499	3,731	3,619
Ireland	1,854	2,396	2,013	2,415
Poland	26,780	28,990	35,526	34,641
Latvia	2,057	3,163	3,497	2,995
Lithuania	4,000	5,208	6,545	5,341
Hungary	14,932	15,698	15,616	13,873
Germany	37,975	44,329	43,301	42,398
Italy	16,310	16,132	16,710	..
Portugal	1,106	1,153	1,045	1,108
Romania	31,553	30,412	18,154	29,679
Spain	24,491	19,942	26,390	24,629
Sweden	3,260	6,148	5,955	4,976
Slovakia	4,038	4,104	4,581	4,326
Türkiye	34,033	34,402	37,186	..
Ukraine	69,111	74,442	64,342	..
Russia	109,838	117,877	130,038	..
Japan	11,575	11,830	10,923	..
China	611,052	614,772	617,483	..
Canada	58,727	61,474	65,014	..
USA	439,711	420,873	434,875	..
Australia	33,860	29,236	26,614	..

Source: Eurostat, FAO

PRODUCTION OF WHEAT

Country	2018	2019	2020	2021
	thousand tonnes			
World total	732,140	764,981	760,926	..
EU27 total (from 2020)	124,511	139,432	126,297	..
Austria	1,375	1,606	1,662	1,539
Belgium	1,652	1,896	1,735	1,649
Bulgaria	5,832	6,162	4,711	7,119
Czechia	4,418	4,812	4,902	4,961
Denmark	2,655	4,697	4,118	4,098
France	35,841	41,083	30,499	37,038
Greece	1,073	979	1,095	853
Poland	9,820	11,012	12,669	12,119
Hungary	5,258	5,378	5,121	5,316
Germany	20,264	23,063	22,172	21,459
Italy	6,933	6,577	6,554	7,118
Romania	10,144	10,297	6,392	11,386
Spain	7,990	5,801	7,821	8,304
Slovakia	1,928	1,939	2,133	2,010
Türkiye	20,013	19,004	20,504	..
Ukraine	24,653	28,370	24,912	..
Russia	72,136	74,453	85,896	..
India	99,870	103,596	107,590	..
China	131,447	133,601	134,255	..
Canada	32,352	32,670	35,183	..
USA	51,306	52,581	49,691	..
Australia	20,941	17,598	14,480	..

Source: Eurostat, FAO

Hungary's wheat production increased by

3.8%

in 2021.

PRODUCTION OF BARLEY

In Hungary, barley production increased by

14.5%.

Country	2018	2019	2020	2021
	thousand tonnes			
World total	139,832	158,463	157,031	..
EU27 total (from 2020)	50,150	55,589	54,678	52,632
Austria	695	833	870	738
Belgium	320	397	327	294
Bulgaria	438	547	549	683
Czechia	1,606	1,718	1,816	1,749
Denmark	3,486	3,667	4,205	3,509
Estonia	348	523	561	396
Finland	1,336	1,682	1,382	1,032
France	11,173	13,725	10,394	11,455
Greece	345	367	399	334
Ireland	1,225	1,558	1,430	1,531
Poland	3,048	3,374	3,001	3,018
Lithuania	620	588	706	500
Hungary	1,146	1,383	1,484	1,699
Germany	9,584	11,592	10,769	10,411
Italy	1,010	1,072	1,091	1,060
Romania	1,871	1,880	1,141	2,435
Spain	9,130	7,400	10,956	8,968
Sweden	1,094	1,547	1,514	1,061
Slovakia	487	600	679	596
Türkiye	7,000	7,600	8,300	..
Ukraine	7,349	8,917	7,636	..
Russia	16,992	20,489	20,939	..
Canada	8,380	10,383	10,741	..
USA	3,343	3,756	3,600	..
Australia	9,254	8,819	10,127	..

Source: Eurostat, FAO

PRODUCTION OF RYE

Country	2018	2019	2020	2021
	thousand tonnes			
World total	10,717	12,825	15,022	..
EU27 total (from 2020)	6,097	8,303	8,843	..
Austria	177	201	219	152
Bulgaria	14	12	10	17
Czechia	120	158	172	127
Denmark	482	894	708	687
France	110	137	133	190
Greece	19	18	18	17
Poland	2,167	2,461	2,960	2,520
Hungary	88	91	84	82
Latvia	82	191	178	138
Italy	11	13	11	11
Romania	29	26	28	34
Spain	388	251	392	301
Sweden	88	221	190	143
Slovakia	41	49	49	38
Türkiye	320	310	296	..
Ukraine	394	335	457	..
Russia	1,916	1,428	2,378	..
Egypt	92	92	92	..
Canada	236	333	488	..
USA	214	270	293	..
Australia	30	30	30	..

Source: Eurostat, FAO

3.0%

less rye was produced in Hungary in 2021 than a year earlier.

PRODUCTION OF OATS

In Hungary, oat production fell by

14.0%.

Country	2018	2019	2020	2021
	thousand tonnes			
World total	22,593	23,132	25,182	..
EU27 total (from 2020)	6,936	6,965	8,504	7,579
Austria	75	78	84	89
Belgium	18	20	18	17
Bulgaria	24	31	30	24
Czechia	153	134	183	195
Denmark	290	250	431	339
Estonia	78	97	118	78
Finland	818	1,170	1,195	790
France	428	407	390	486
Greece	81	79	78	75
Netherlands	7	8	8	7
Ireland	122	203	190	237
Poland	1,166	1,233	1,658	1,656
Latvia	188	238	288	183
Lithuania	182	178	276	170
Hungary	59	70	77	66
Germany	578	519	722	767
Italy	243	238	243	233
Portugal	56	50	47	44
Romania	384	362	197	245
Spain	1,487	808	1,324	1,198
Sweden	364	671	808	552
Slovakia	30	32	33	38
Türkiye	260	264	314	..
Ukraine	418	422	510	..
Russia	4,719	4,424	4,132	..
China	509	516	511	..
Chile	571	385	477	..
Canada	3,436	4,227	4,576	..
USA	815	773	949	..

Source: Eurostat, FAO

PRODUCTION OF MAIZE

Country	2018	2019	2020	2021
	thousand tonnes			
World total	1,124,261	1,141,360	1,162,353	..
EU27 total (from 2020)	69,005	70,099	66,998	72,524
Austria	2,130	2,299	2,412	2,435
Belgium	443	530	519	574
Bulgaria	3,478	3,990	2,969	3,376
Czechia	489	620	826	988
France	12,728	12,996	13,577	15,466
Greece	1,206	1,234	1,178	1,118
Netherlands	107	185	208	222
Poland	3,864	3,734	6,822	7,461
Hungary	7,977	8,278	8,414	6,301
Germany	3,344	3,665	4,020	4,462
Italy	6,179	6,259	6,771	6,060
Portugal	714	755	682	716
Romania	18,664	17,432	10,097	15,186
Spain	3,843	4,184	4,214	4,264
Slovakia	1,516	1,445	1,643	1,598
Slovenia	350	360	430	391
Türkiye	5,700	6,000	6,500	..
Ukraine	35,801	35,880	30,290	..
Russia	11,419	14,282	13,879	..
India	28,753	27,715	30,160	..
China	257,349	260,958	260,876	..
Egypt	5,111	7,593	7,500	..
Argentina	43,462	56,861	58,396	..
Brazil	82,367	101,126	103,964	..
Canada	13,885	13,404	13,563	..
Mexico	27,169	27,228	27,425	..
USA	364,262	345,962	360,252	..

Source: Eurostat, FAO

In 2021, Hungary produced

35.1%

less maize than in the previous year.

PRODUCTION OF RICE, PADDY

Rice yields in Hungary
decreased by

19.7%.

Country	2018	2019	2020	2021
	thousand tonnes			
World total	759,067	749,190	756,744	..
EU27 total (from 2020)	2,841	2,858	2,845	..
Bulgaria	63	71	71	59
Greece	225	224	291	214
Hungary	13	11	12	9
Italy	1,476	1,498	1,513	..
Spain	808	788	748	633
Portugal	161	162	133	173
Romania	43	40	25	25
Türkiye	564	1,001	981	..
Bangladesh	54,416	54,586	54,906	..
Philippines	19,066	18,815	19,295	..
India	174,717	177,645	178,305	..
Indonesia	59,201	54,604	54,649	..
Japan	10,606	10,527	9,706	..
China	214,079	211,405	213,611	..
Korea Republic	5,195	5,016	4,713	..
Korea D. P. Republic	2,088	2,804	2,113	..
Myanmar (Burma)	27,574	26,270	25,100	..
Thailand	32,348	28,618	30,231	..
Vietnam	44,046	43,495	42,759	..
Egypt	3,124	4,804	4,894	..
Madagascar	4,030	4,231	4,232	..
Brazil	11,808	10,369	11,091	..

Source: Eurostat, FAO

PRODUCTION OF SUGAR-BEET

Country	2018	2019	2020	2021
	thousand tonnes			
World total	273,388	280,919	252,969	..
EU27 total (from 2020)	111,933	113,128	100,861	..
Austria	2,150	1,965	2,092	3,017
Belgium	5,192	5,072	4,784	4,552
Czechia	3,724	3,661	3,671	4,145
Denmark	2,108	2,340	2,559	2,573
Finland	355	501	422	403
France	39,914	38,024	26,195	34,446
Netherlands	6,506	6,645	6,691	6,541
Poland	14,303	13,837	14,947	15,274
Lithuania	889	1,002	948	856
Croatia	776	709	774	730
Hungary	958	824	780	645
Germany	26,191	29,728	28,618	31,945
Italy	1,941	1,779	1,831	..
Romania	978	917	718	770
Spain	2,871	2,753	2,433	2,585
Sweden	1,698	2,029	2,027	2,065
Slovakia	1,312	1,252	1,273	1,364
Türkiye	18,900	18,055	23,026	..
Ukraine	13,968	10,205	9,150	..
Russia	42,066	54,350	33,915	..
Japan	3,611	3,986	3,912	..
China	11,277	12,273	11,598	..
USA	30,193	25,991	30,498	..

Source: Eurostat, FAO

Production of sugar-beet was decreased by

17.3%

in Hungary.

PRODUCTION OF SUNFLOWER SEEDS

The sunflower yield
in Hungary
increased by

3.7%

in 2021.

Country	2018	2019	2020	2021
	thousand tonnes			
World total	51,914	56,021	50,230	..
EU27 total (from 2020)	10,003	10,279	9,026	10,359
Bulgaria	1,927	1,914	1,720	1,989
France	1,239	1,298	1,607	1,911
Hungary	1,830	1,707	1,698	1,761
Romania	3,063	3,569	2,123	2,818
Spain	950	774	883	767
Türkiye	1,949	2,100	2,067	..
Ukraine	14,165	15,254	13,110	..
Russia	12,756	15,379	13,314	..
Argentina	3,538	3,826	3,233	..
USA	956	887	1,353	..

Source: Eurostat, FAO

PRODUCTION OF RAPESEED

Country	2018	2019	2020	2021
	thousand tonnes			
World total	75,184	71,839	72,376	..
EU27 total (from 2020)	17,917	15,289	16,575	16,871
Austria	121	107	100	86
Belgium	43	33	30	28
Bulgaria	471	428	277	372
Czechia	1,411	1,157	1,245	1,025
Denmark	489	729	560	651
France	4,981	3,523	3,297	3,286
Poland	2,202	2,373	3,125	3,191
Hungary	1,003	912	877	722
Germany	3,677	2,830	3,527	3,505
Italy	39	38	48	55
Romania	1,611	798	780	1,353
Spain	179	144	195	217
Slovakia	480	418	441	420
Türkiye	125	180	122	..
Ukraine	2,751	3,280	2,557	..
Russia	1,989	2,060	2,572	..
Canada	20,343	19,912	19,485	..
USA	1,644	1,553	1,576	..
Australia	3,893	2,366	2,299	..

Source: Eurostat, FAO

In Hungary, rapeseed yields were

17.7%

lower than a year earlier.

PRODUCTION OF POTATOES

In Hungary,
potato yields were

15.4%

lower in 2021 than in
the previous year.

Country	2018	2019	2020	2021
	thousand tonnes			
World total	365,666	354,812	359,071	..
EU27 total (from 2020)	46,777	51,085	52,863	50,203
Austria	698	751	886	770
Belgium	3,045	4,028	3,929	3,858
Czechia	584	623	696	672
Denmark	1,807	2,409	2,763	2,375
Finland	600	619	624	559
France	7,860	8,560	8,692	8,787
Greece	466	470	451	412
Netherlands	6,025	6,961	7,020	6,678
Ireland	273	382	300	331
Poland	7,312	6,482	7,849	7,081
Lithuania	290	330	297	200
Hungary	328	344	270	228
Germany	8,921	10,602	11,715	11,312
Italy	1,308	1,338	1,435	1,362
Portugal	432	424	410	410
Romania	3,023	2,627	1,601	1,377
Spain	2,011	2,259	2,052	2,141
Sweden	723	847	877	826
Slovakia	170	182	166	151
Ukraine	22,504	20,269	20,838	..
Russia	22,395	22,075	19,607	..
India	51,310	50,190	51,300	..
China	90,321	75,658	78,237	..
Japan	2,260	2,399	2,274	..
Canada	5,205	5,364	5,295	..
USA	20,422	19,251	18,790	..

Source: Eurostat, FAO

TOTAL PRODUCTION OF VEGETABLES^{a)}

Country	2018	2019	2020	2021
	thousand tonnes			
World total	1,111,046	1,129,673	1,148,446	..
EU27 total (from 2020)	60,273	62,037	61,777	65,635
Austria	563	611	645	675
Belgium	2,041	2,222	2,188	2,213
Bulgaria	575	551	455	488
Denmark	279	282	277	271
France	5,654	5,552	5,512	6,173
Greece	2,669	2,201	2,451	2,239
Netherlands	4,596	5,328	5,267	5,597
Poland	5,285	5,036	4,835	5,490
Hungary	1,520	1,493	1,424	1,346
Germany	3,450	3,904	3,888	4,259
Italy	12,648	12,778	13,186	13,726
Portugal	5,285	5,036	4,835	5,490
Romania	2,615	2,384	2,303	2,269
Spain	14,534	15,439	14,827	15,945
Slovakia	106	126	123	148
Türkiye	24,173	25,382	25,961	..
Ukraine	9,458	9,707	9,675	..
Russia	13,716	14,153	13,951	..
India	135,591	137,402	141,195	..
Japan	10,120	10,389	10,222	..
China	581,138	587,223	596,166	..
Egypt	15,385	16,007	16,135	..
Brazil	8,765	8,576	8,374	..
Canada	2,287	2,287	2,241	..
Mexico	16,087	15,132	15,098	..

^{a)} Melons included.

Source: Eurostat, FAO, Hungarian Central Statistical Office

Hungary's total vegetable production decreased by

5.5%.

SUMMARY DATA

AGRICULTURE

FOOD INDUSTRY

FORESTRY, FISHERY

INTERNATIONAL TRADE

COUNTRY DATA

INTERNATIONAL DATA

PRODUCTION OF APPLE

Apple production
grew by

28.2%

in Hungary.

Country	2018	2019	2020	2021
	thousand tonnes			
World total	85,912	87,481	86,443	..
EU27 total (from 2020)	13,333	11,585	11,809	12,293
Austria	388	239	258	206
Belgium	231	242	168	240
Bulgaria	50	44	38	44
Czechia	152	100	116	115
Denmark	33	25	40	31
France	1,740	1,754	1,620	1,610
Greece	286	277	304	308
Netherlands	269	273	220	245
Poland	4,000	3,081	3,531	4,007
Hungary	679	498	399	511
Germany	1,199	991	1,023	1,005
Italy	2,467	2,304	2,462	2,212
Portugal	264	371	286	343
Romania	635	493	537	580
Spain	563	639	522	616
Slovakia	44	35	28	30
Slovenia	87	54	66	23
Türkiye	3,626	3,619	4,300	..
Ukraine	1,462	1,154	1,115	..
Russia	1,859	1,951	2,041	..
China	39,235	42,427	40,501	..
India	2,327	2,316	2,734	..
Brazil	1,203	1,223	983	..
Argentina	510	538	536	..
USA	4,645	5,029	4,651	..

Source: Eurostat, FAO

PRODUCTION OF GRAPES

Country	2018	2019	2020	2021
	thousand tonnes			
World total	80,044	77,000	78,034	..
EU27 total (from 2020)	27,628	24,220	26,001	23,783
Austria	367	310	320	328
Bulgaria	202	179	159	178
France	6,268	5,490	5,884	4,494
Greece	933	808	816	740
Hungary	533	457	435	426
Italy	8,514	7,900	8,222	8,149
Spain	6,983	5,745	6,818	6,087
Portugal	802	865	853	854
Romania	1,141	974	933	991
Türkiye	3,933	4,100	4,209	..
Ukraine	468	366	281	..
Russia	628	678	682	..
China	13,765	14,284	14,843	..
India	2,920	3,041	3,125	..
Egypt	1,641	1,595	1,586	..
Argentina	2,573	2,520	2,056	..
Brazil	1,592	1,486	1,436	..
USA	6,891	6,315	5,389	..
Australia	1,664	1,554	1,475	..

Source: Eurostat, FAO

In Hungary, the grape yield was

2.0%

less than a year earlier.

CATTLE POPULATION

Hungary's cattle population decreased by

2.5%.

Country	2018	2019	2020	2021
	thousand heads			
World total	1,493,932	1,511,107	1,525,939	..
EU14 total (from 2020)	64,172	63,466	62,753	61,853
EU27 total (from 2020)	77,840	77,161	76,499	75,648
Austria	1,913	1,880	1,855	1,870
Belgium	2,398	2,373	2,335	2,310
Czechia	1,365	1,367	1,340	1,359
Denmark	1,530	1,500	1,500	1,480
France	18,613	18,173	17,816	17,330
Netherlands	3,690	3,721	3,691	3,705
Ireland	6,593	6,560	6,529	6,649
Poland	6,183	6,262	6,279	6,379
Hungary	885	909	933	910
Germany	11,949	11,640	11,302	11,040
Italy	6,311	6,377	6,400	6,280
Portugal	1,632	1,675	1,691	1,641
Romania	1,977	1,923	1,875	1,819
Spain	6,511	6,600	6,636	6,576
Slovakia	439	432	442	434
Türkiye	17,221	17,872	18,158	18,036
Ukraine	3,531	3,333	3,092	..
Russia	18,294	18,151	18,126	..
India	192,265	193,463	194,482	..
China	63,418	63,823	61,129	..
Argentina	54,793	55,008	54,461	..
Brazil	213,809	215,009	218,150	..
Canada	11,565	11,500	11,265	..
Mexico	34,820	35,225	35,639	..
USA	94,298	94,805	93,793	..
Australia	26,396	24,723	23,503	..

Source: Eurostat, FAO

PIG POPULATION

Country	2018	2019	2020	2021
	thousand heads			
World total	970,695	852,618	952,632	..
EU14 total (from 2020)	120,031	120,057	121,974	119,629
EU27 total (from 2020)	143,519	143,146	145,877	141,656
Austria	2,777	2,773	2,806	2,786
Bulgaria	6,209	6,085	6,218	6,042
Czechia	1,508	1,509	1,546	1,493
Denmark	12,642	12,728	13,391	13,152
France	13,713	13,510	13,393	12,941
Netherlands	11,909	11,921	11,541	10,872
Poland	11,028	11,216	11,727	10,242
Hungary	2,872	2,634	2,850	2,726
Germany	26,445	26,053	26,070	23,762
Italy	8,492	8,510	8,543	8,408
Romania	3,925	3,834	3,785	3,620
Spain	30,804	31,246	32,796	34,454
Portugal	2,205	2,256	2,252	2,221
Slovakia	627	589	538	453
Ukraine	6,110	6,025	5,727	..
Russia	23,076	23,727	25,163	..
Japan	9,189	9,156	9,124	..
India	9,264	9,055	8,852	..
China	433,764	316,081	412,172	..
Brazil	41,232	40,556	41,124	..
Canada	14,170	13,975	13,970	..
Mexico	17,839	18,365	18,788	..
USA	75,070	78,228	77,312	..

Source: Eurostat, FAO

The Hungarian pig population decreased by

4.4%.

SHEEP POPULATION

Sheep population in
Hungary fell by

6.0%.

Country	2018	2019	2020	2021
	thousand heads			
World total	1,213,972	1,240,310	1,263,137	..
EU14 total (from 2020)	..	47,538
EU27 total (from 2020)	..	85,214
Austria	406	403	394	402
Bulgaria	1,350	1,281	1,308	1,200
France	7,166	7,105	6,999	6,995
Greece	8,430	8,427	7,306	7,253
Netherlands	743	758	710	729
Ireland	3,798	3,809	3,877	3,991
Hungary	1,109	1,061	944	887
Germany	1,570	1,557	1,484	1,508
Italy	7,179	7,001	7,034	6,728
Portugal	2,208	2,220	2,304	2,238
Romania	10,176	10,359	10,282	10,050
Spain	15,853	15,479	15,439	15,081
Slovakia	351	321
Türkiye	35,195	37,276	42,127	45,178
Ukraine	727	699	659	..
Russia	22,347	21,136	20,655	..
India	72,119	74,261	68,100	..
China	161,388	163,490	173,096	..
Argentina	14,340	14,774	14,572	..
Brazil	18,947	19,972	20,629	..
Mexico	8,684	8,708	8,726	..
USA	5,265	5,230	5,200	..
Australia	70,067	65,755	63,529	..

Source: Eurostat, FAO

PORK PRODUCTION

Country	2018	2019	2020	2021
	thousand tonnes			
World total	120,690	109,636	109,835	..
EU14 total (from 2020)	19,401	19,357
EU27 total (from 2020)	22,920	22,768	23,031	23,394
Austria	510	502	503	502
Belgium	1,073	1,039	1,099	1,140
Czechia	211	210	..	217
Denmark	1,581	1,499	1,595	1,724
France	2,182	2,200	2,201	2,204
Netherlands	1,536	1,628	1,662	1,719
Poland	2,082	1,979	1,974	1,976
Hungary	436	435	448	463
Germany	5,343	5,227	5,112	4,965
Italy	1,471	1,448	1,271	1,335
Spain	4,530	4,641	5,003	5,180
Ukraine	703	708
Russia	3,744	3,937	4,282	..
India	376	358	336	..
China	54,992	43,498	42,102	..
Argentina	621	630	655	..
Brazil	3,951	4,126	4,482	..
Mexico	1,503	1,600	1,652	..
USA	11,943	12,543	12,845	..
Australia	417	414	403	..

Source: Eurostat, FAO

Pork production in Hungary decreased by

3.3%.

BEEF AND VEAL PRODUCTION

Beef production in
Hungary grew by

3.1%.

Country	2018	2019	2020	2021
	thousand tonnes			
World total	71,002	72,040	72,070	..
EU14 total (from 2020)	6,129	6,034
EU27 total (from 2020)	7,009	6,908	6,822	6,802
Austria	233	230	218	214
Belgium	277	264	255	247
Czechia	72	73	73	73
Denmark	129	125	121	122
France	1,460	1,428	1,435	1,424
Netherlands	459	424	433	430
Poland	565	560	559	555
Hungary	29	30	28	29
Germany	1,102	1,106	1,090	1,072
Italy	809	780	732	748
Spain	669	695	678	718
Türkiye	571	632	458	452
Ukraine	359	370	345	..
Russia	1,608	1,625	1,634	..
India	2,570	2,540	2,516	..
China	6,455	6,661	6,721	..
Argentina	3,066	3,136	3,168	..
Brazil	9,900	10,200	10,100	..
Mexico	1,981	2,028	2,081	..
USA	12,219	12,349	12,357	..
Australia	2,238	2,352	2,372	..

Source: Eurostat, FAO

MILK PRODUCTION^{a)}

Country	2018	2019	2020	2021
	thousand tonnes			
World total	700,216	708,264	718,038	..
EU27 total (from 2020)	156,739	158,283	159,511	..
Austria	3,860	3,820	3,852	3,867
Belgium	4,236	4,337	4,494	4,477
Czechia	3,162	3,156	..	3,311
Denmark	5,615	5,615	5,666	5,644
France	26,023	26,036	25,517	25,059
Netherlands	14,426	14,944	14,932	..
Poland	14,179	14,511	14,831	14,890
Hungary	1,954	1,967	2,019	2,085
Germany	33,110	33,103	33,189	..
Italy	13,132	13,300	13,510	13,997
Portugal	2,040	2,082	2,099	2,100
Romania
Spain	8,418	8,560
Slovenia	631	626	633	643
Slovakia	917	916	930	914
Ukraine	9,826	9,448	9,058	..
Russia	30,345	31,101	31,960	..
Japan	7,289	7,314	7,438	..
China	31,165	32,444	34,837	..
Brazil	34,925	35,966	36,508	..
Canada	9,219	9,210	9,331	..
Mexico	12,006	12,276	12,564	..
USA	98,687	99,083	101,251	..

Hungary's milk production grew by

3.3%

in 2021.

^{a)} Cow milk production.

Source: Eurostat, FAO

EMPLOYMENT^{a)}

In Hungary, total employment in agriculture, game management and fishery sector fell by

5.1%.

Country	2018	2019	2020	2021 ^{a)}
	thousand persons			
EU14 total (from 2020)	3,961	3,930
EU27 total (from 2020)	8,057	7,901	7,724	6,983
Austria	141	142	151	144
Belgium	43	41	40	39
Bulgaria	197	203	194	185
Cyprus	7	8	9	9
Czechia	142	135	131	129
Denmark	55	57	53	50
Estonia	21	21	19	16
Finland	82	83	78	85
France	636	638	597	648
Greece	438	419	377	409
Netherlands	151	155	152	192
Croatia	91	92	99	107
Ireland	83	81	79	79
Poland	1,517	1,447	1,514	1,347
Latvia	61	64	62	55
Lithuania	93	83	72	68
Luxembourg	3	2	2	3
Hungary	210	207	205	195
Malta	2	2	3	2
Germany	475	464	458	468
Italy	811	844	843	836
Portugal	174	159	147	113
Romania	1,657	1,602	1,533	862
Spain	798	782	748	784
Sweden	73	66	63	66
Slovakia	57	71	64	62
Slovenia	42	36	34	33

^{a)} Total employment in agriculture, game management and fishery sector, age group 15-64.

Source: Eurostat

PRODUCER PRICE INDEX, NOMINAL VALUE

Member states	Crop products		Animal products		Total	
	2020/2019	2021/2020	2020/2019	2021/2020	2020/2019	2021/2020
	per cent change					
EU27 total (from 2020)	1.3	13.6	-2.1	4.1	-0.3	9.3
Belgium	-0.3	20.2	-5.9	2.1	-3.4	10.4
Bulgaria	11.1	26.0	0.6	1.5	8.4	20.2
Czechia	-4.0	12.4	-2.4	-0.2	-3.3	6.9
Denmark	-1.4	9.9	2.2	-0.6	1.1	2.6
Germany	-2.0	18.4	-4.0	2.8	-3.4	9.0
Estonia	-2.9	29.9	-3.8	3.0	-3.3	16.4
Ireland	-13.4	9.0	3.2	12.0	0.8	11.5
Greece	-2.1	13.5	1.4	2.9	-1.2	10.6
Spain	1.4	14.0	-1.3	2.4	0.2	9.0
France	1.9	12.3	-1.5	4.3	0.5	9.1
Croatia	0.4	20.7	0.6	-0.5	0.5	12.6
Italy	3.1	11.8	-2.6	3.5	0.8	8.6
Cyprus	-6.9	-8.5	-1.6	0.2	-3.8	-3.3
Latvia	-0.6	22.4	-4.1	7.8	-2.0	16.5
Lithuania	-0.9	19.1	-2.1	10.4	-1.4	15.6
Luxembourg	-1.8	10.5	-1.0	3.5	-1.2	4.9
Hungary	11.4	28.9	1.1	3.8	7.6	20.0
Malta	-2.8	-0.1	0.6	4.6	-0.9	2.6
Netherlands	-3.2	12.9	-7.6	4.8	-5.2	9.4
Austria	2.4	16.2	-0.3	3.8	0.7	8.8
Poland	2.5	6.6	-3.4	10.5	-0.5	8.5
Portugal	2.2	8.0	-2.3	2.0	0.4	5.7
Romania	7.4	12.2	8.3	3.0	7.6	10.0
Slovenia	1.1	15.1	-3.9	3.9	-2.0	8.3
Slovakia	0.2	20.6	0.7	-0.6	0.4	12.3
Finland	-5.0	10.7	-0.6	5.1	-2.3	7.1
Sweden	-4.0	12.5	1.4	7.1	-1.1	9.6

Source: Eurostat

In Hungary, producer prices of crop and animal products increased by

20.0%

at nominal value.

INPUT PRICE INDEX, NOMINAL VALUE

In Hungary, the agricultural input price index increased by

17.3%

at nominal value.

Member states	Intermediate consumption		Capital formation		Total	
	2020/2019	2021/2020	2020/2019	2021/2020	2020/2019	2021/2020
	per cent change					
EU27 total (from 2020)	-1.5	11.4	1.7	4.3	-1.0	10.1
Belgium	-1.6	14.4	-0.6	7.4	-1.5	13.2
Bulgaria	-3.1	11.5	-0.1	1.1	-2.9	10.7
Czechia	-0.6	6.5	5.0	0.7	0.4	5.4
Denmark	-0.5	7.2	-0.7	1.1	-0.5	6.3
Germany	-0.8	9.5	2.0	3.7	-0.1	7.9
Estonia	-1.9	8.6	0.8	3.5	-1.4	7.4
Ireland	-2.7	9.2	0.9	3.4	-2.0	8.1
Greece	-3.5	8.5	0.4	1.9	-2.8	7.3
Spain	-2.7	14.1	0.0	4.8	-2.4	12.9
France	-2.3	10.1	0.9	5.9	-1.5	9.0
Croatia	-3.2	20.5	0.1	0.2	-2.8	17.9
Italy	0.1	9.2	1.2	2.4	0.4	7.2
Cyprus	-2.1	12.6	-0.3	8.1	-2.0	12.4
Latvia	-2.1	6.5	3.1	6.4	-0.9	6.5
Lithuania	-5.4	20.2	9.3	14.2	-1.3	18.4
Luxembourg	-2.2	12.5	2.1	6.3	-0.2	9.5
Hungary	0.2	18.7	6.1	8.0	1.1	17.1
Malta	0.9	8.4	0.7	2.6	0.8	7.5
Netherlands	-2.4	19.1	1.5	3.4	-1.5	15.5
Austria	-1.2	8.6	2.2	4.0	0.0	7.0
Poland	-1.1	13.0	3.4	5.9	-0.9	12.7
Portugal	-0.4	14.2	1.5	3.2	-0.2	12.8
Romania	-1.1	12.3	13.9	6.2	0.6	11.5
Slovenia	-3.0	12.3	2.0	4.7	-1.4	9.8
Slovakia	-4.0	9.0	0.2	2.1	-3.6	8.4
Finland	-5.4	13.1	0.9	4.8	-3.6	10.5
Sweden	-4.2	10.1	2.8	6.1	-2.6	9.2

Source: Eurostat

PRODUCER PRICE INDEX, NOMINAL VALUE

Member states	2018	2019	2020	2021 ^(*)
	2015 = 100.0			
EU27 total (from 2020)	106.5	108.5	108.2	118.3
Belgium	117.4	116.5	112.5	124.1
Bulgária	95.9	97.3	105.5	126.8
Czechia	101.2	106.3	102.8	109.9
Denmark	98.3	105.5	106.6	109.4
Germany	109.0	111.6	107.8	117.5
Estonia	113.7	115.4	111.6	129.8
Ireland	104.3	103.2	103.9	115.9
Greece	99.7	100.1	99.0	109.5
Spain	102.9	98.6	98.8	107.7
France	105.8	108.0	108.6	118.4
Croatia	101.7	102.5	103.0	116.0
Italy	106.0	107.2	108.1	117.4
Cyprus	100.0	105.9	101.9	98.5
Latvia	117.1	119.3	116.9	136.2
Lithuania	107.5	112.0	110.4	127.7
Luxembourg	106.3	108.3	107.0	112.2
Hungary	104.0	109.7	118.0	141.6
Malta	100.2	109.7	108.7	111.6
Netherlands	105.3	108.7	103.1	112.8
Austria	105.5	107.6	108.4	117.9
Poland	117.2	126.0	125.3	136.0
Portugal	107.6	108.3	108.7	114.8
Romania	109.0	119.9	129.0	141.8
Slovenia	106.3	110.3	108.1	117.0
Slovakia	101.1	102.9	103.4	116.1
Finland	103.3	103.1	100.8	108.0
Sweden	121.5	120.0	118.6	129.9

Source: Eurostat

In Hungary, the producer price index of agricultural products increased by

41.6%

compared to 2015.

PURCHASE PRICE INDEX OF AGRICULTURAL GOODS AND SERVICES, NOMINAL VALUE

In Hungary, the purchase price index of agricultural goods and services increased by

27.0%

compared to 2015.

Member states	2018	2019	2020	2021 ^(*)
	2015 = 100.0			
EU27 total (from 2020)	103.1	104.7	103.7	114.1
Belgium	106.0	107.9	106.3	120.3
Bulgária	102.1	103.9	100.9	111.7
Czechia	99.8	102.6	103.0	108.6
Denmark	103.2	104.3	103.8	110.3
Germany	103.8	105.6	105.5	113.8
Estonia	101.8	103.6	102.2	109.8
Ireland	102.5	104.8	102.6	110.9
Greece	102.8	102.8	99.9	107.2
Spain	100.6	101.7	99.3	112.1
France	102.2	103.9	102.3	111.5
Croatia	97.0	97.4	94.7	111.7
Italy	104.3	105.9	106.3	114.0
Cyprus	93.4	96.1	94.2	105.9
Latvia	103.4	104.4	103.5	110.2
Lithuania	101.9	94.1	93.0	110.0
Luxembourg	102.9	104.8	104.6	114.6
Hungary	103.1	107.3	108.5	127.0
Malta	100.8	102.7	103.6	111.3
Netherlands	102.6	103.3	101.8	117.6
Austria	103.4	104.6	104.6	111.9
Poland	103.6	107.1	106.1	119.6
Portugal	100.8	101.4	101.2	114.2
Romania	107.4	110.1	110.8	123.5
Slovenia	102.9	105.6	104.2	114.3
Slovakia	100.1	102.2	98.5	106.7
Finland	102.6	104.7	101.0	111.6
Sweden	108.5	111.8	108.9	118.9

Source: Eurostat

