

# Landscape and community based management of rural areas

*(New system thinking approach for partnership in management of rural areas based on community and landscape resilience)*



**Zsolt Szilvácsku PhD**



Szent István University of Gödöllő, Dept. Landscape  
Planning and Regional Development (Budapest), assistant  
professor

and

Association of Hungarian Nature Parks, vice president

# Who and Where work on RD?

- **Destucted (wrek) society**

- east-west, south-north
- common values (set)
- capabilities, competencies
- society networks
- social impacts of development and management

- **Territorial consequence**

- unadapted development from territorial point of view
- lack of synergies
- landscape for development in contrast with landscape as the territory of life (society, wildlife...)

# **Scope of the study**

## **European Naturparks as**

- Organisation for developments on landscape or micro-region level (min. 3 but not more than 100 settlement)
- Local co-operation and networks (min. public, private and NGO) on landscape or micro-region level

## **Connection between Society and Landscape rehabilitation and maintenance**

- Competencies (knowledge, legitimacy, capability)
- Methodology and framework for integration
- Practice (best practice and lessons learned)

# What is a Nature Park?

The statutory goal of nature parks is the protection of a landscape in connection with their use. Here are particularly valuable characteristic landscapes are preserved and developed from destruction.

The award of a rural region with the title "Nature Park" is made by the respective state government and provides the following challenges to the region:

- Protection and development of the landscape
- Creation of recreational opportunities
- Environmental and cultural education opportunities
- Promoting sustainable regional development by creating jobs and sideline opportunities in tourism and agriculture

[Home](#)

[Aktuelles](#)

[Fotowettbewerb](#)

[Naturparke](#)

## Urlaub & Freizeit

[Unterkünfte](#)

[Reisepauschalen](#)

[Aktivitäten](#)

[Touren](#)

[Angebote für Schulen](#)

[Infothek](#)

[Presse](#)

[Wir über uns](#)

[Projekte](#)

[Kooperationen](#)

[Spenden](#)

[Suche](#)



**Kurz**  
Urlaub in  
Deutschland  
**nah**  
**weg**

Mitmachen &  
Natur erleben

Augenblick Natur!

Fotowettbewerb  
Naturparke Deutschland



[>> Liste](#)

## Aktivitäten, Unterkünfte, Landschaftstypen

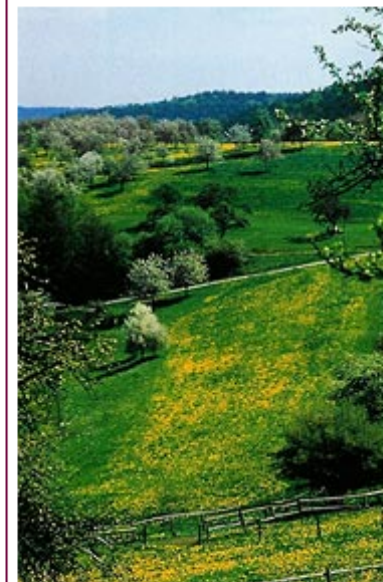


Finden Sie den Park  
Ihrer Wahl

## Reiseangebote

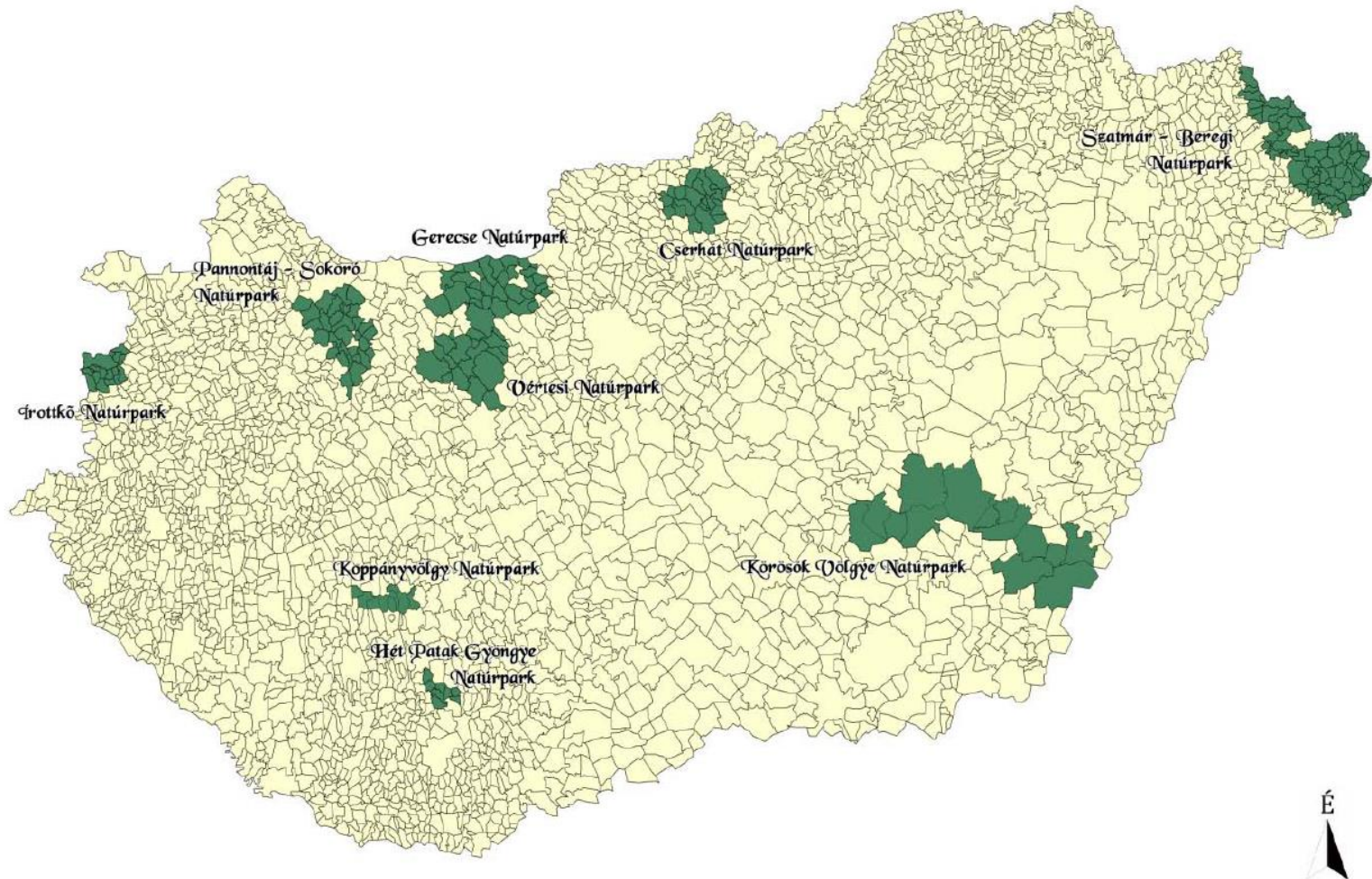


Hier finden Sie aktuelle  
Reiseangebote und  
Pauschalen





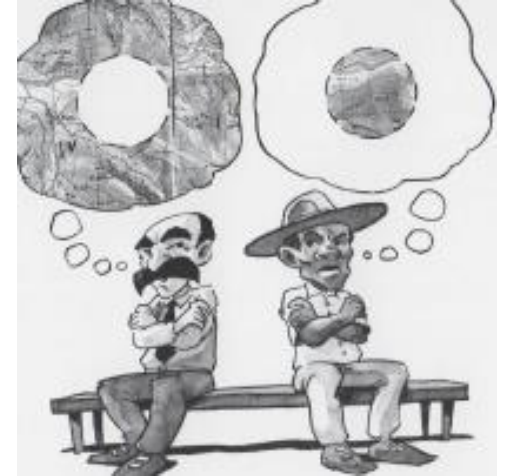
# Hungarian Nature Parks



# Integrating Landscape Management Policy

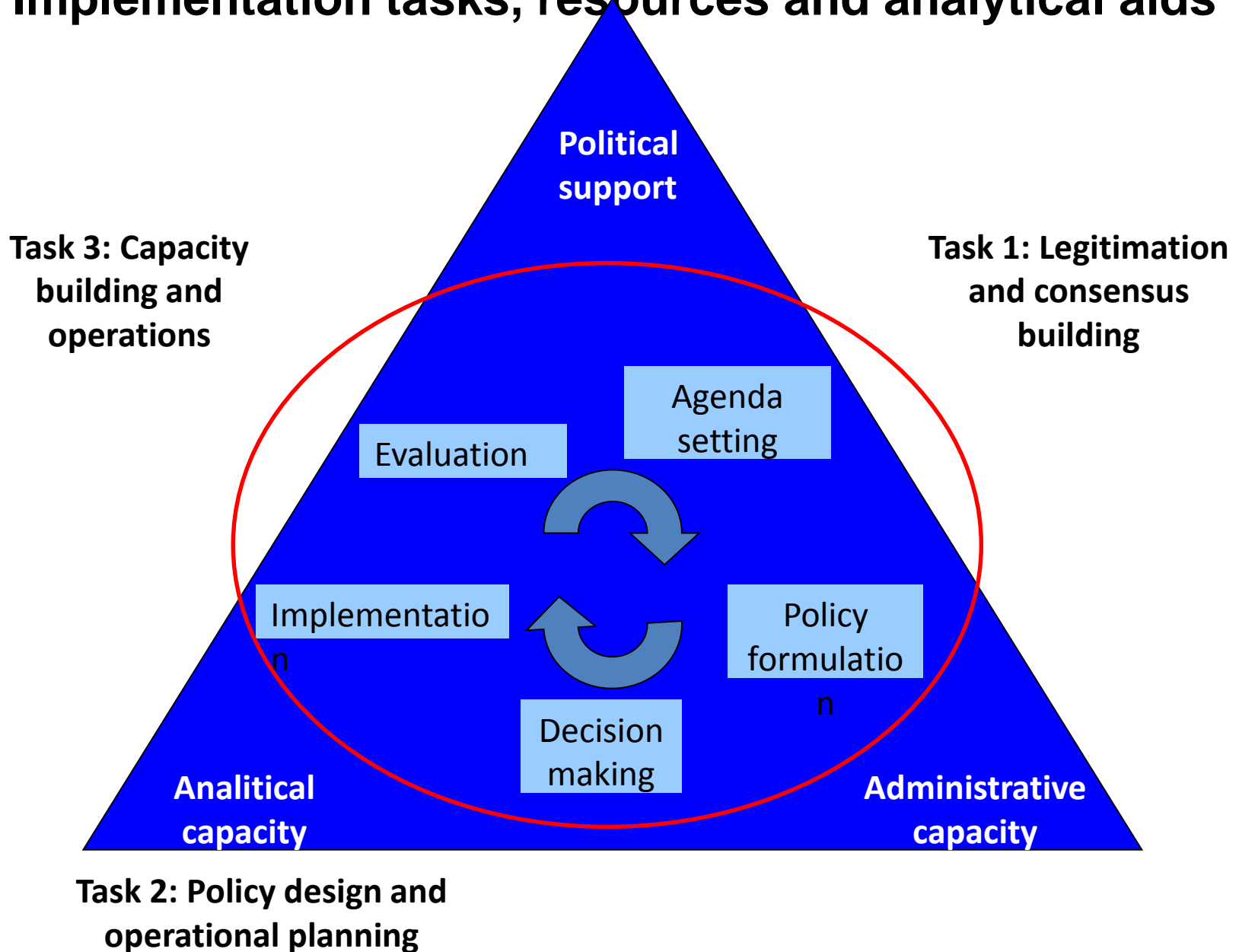
## **Typical implementation barriers**

- Support and authorization barriers
  - Weak political support
  - Poor incentives for implementer
- Analytical competence barriers
  - Changing priorities and poor design
- Operation capacity barriers
  - Weak management structure or network coordination capacity



# Integrating Landscape Management Policy

## Implementation tasks, resources and analytical aids





# Integrating Landscape Management Policy

## **Agenda setting – key points**

- Framing the landscape management issue in sustainability terms
- Harmonizing the interests of different stakeholders
- Managing the entry of an issue onto the agenda
- **Seeking policy windows**



## **Turn in the right direction?**

- **Results Based Management**

targeted results, responsibility and results, etc

- **Community Based Management**

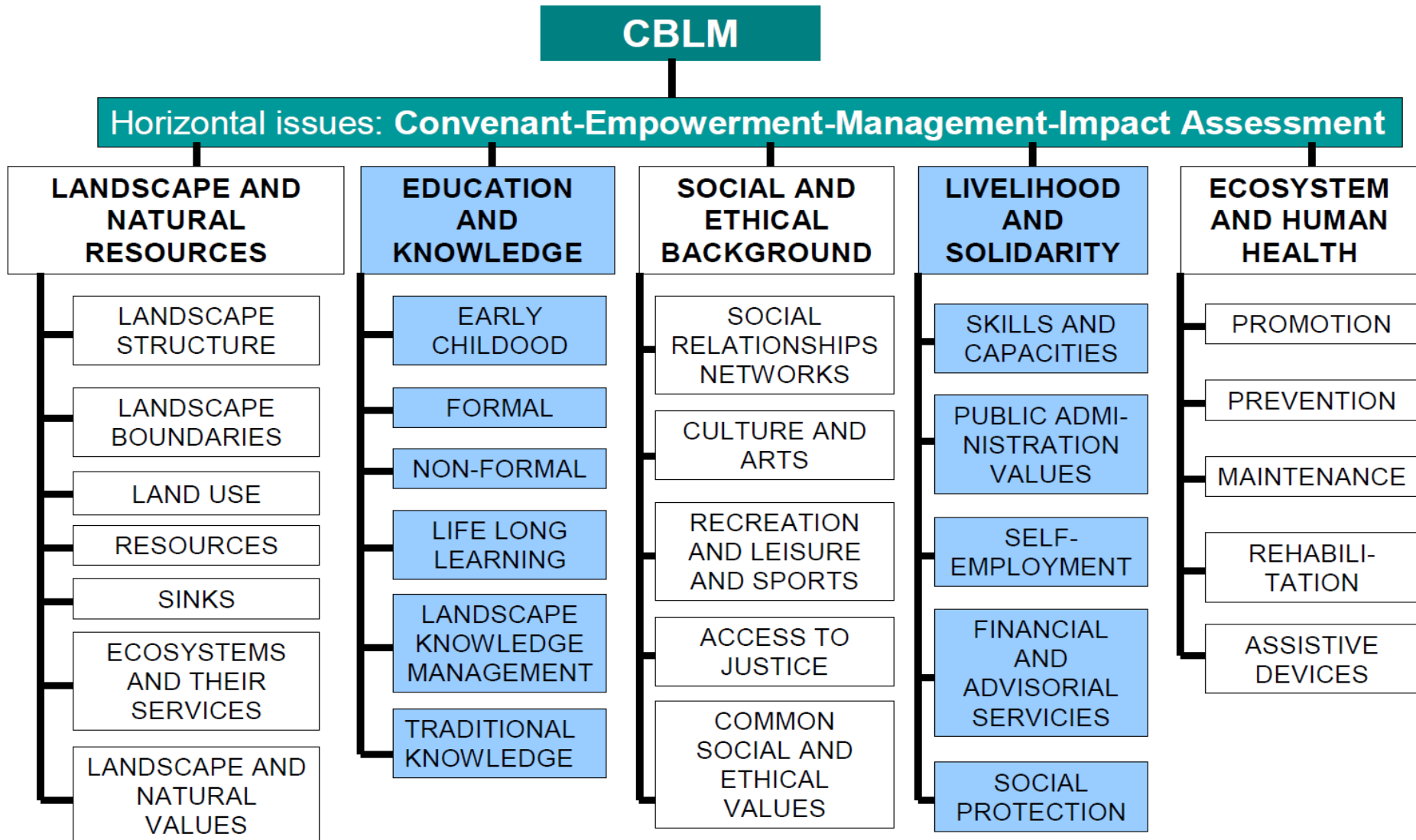
participation, taking and giving, empowerment, etc

# Results Based Management

„The way an organization is motivated and applies processes and resources to achieve targeted results.”

1. **Specified** results that are measurable, monitorable, and relevant
2. **Resources** that are adequate for achieving the targeted results
3. **Organisational arrangements** that ensure authority and responsibilities are aligned with results and resources
4. **Processes** for planning, monitoring, communicating and resource release that enable the organisation to convert resources into the desired results

# ***Community based landscape maintenance (CBLM) matrix for planning, monitoring and evaluation***



# Integrating Landscape Management Policy based on community and results

Development phases:

1. **Plant a good tree** (invitation, manage the first meetings, strengthen of networking)
2. **Let the tree grow with good nutrients nurturing** (Engage and train people, manage the dynamic of development, self-reflection, evaluation)
3. **Let the tree branch out, bear fruits...**  
(Manage the knowledge, reflection, empowerment)



**THANKS**

**FOR YOU, IF YOU DO IT NOW!**